

Accademia B

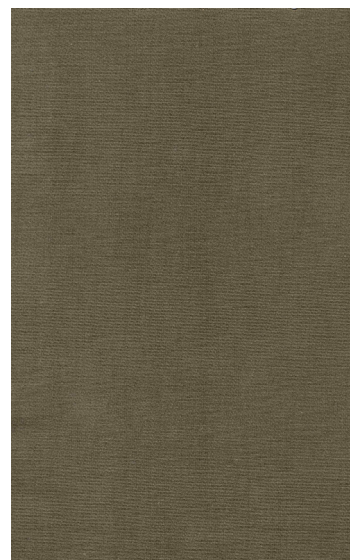
MADE IN ITALY



009 SABBIA



011 AVANA



006 MUSCHIO



005 OLIVA



203 SIENA



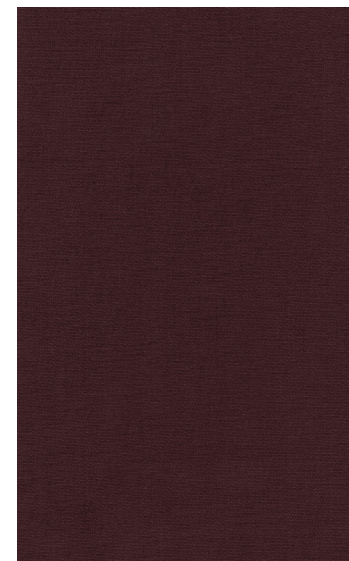
101 GHIACCIO



104 ACCIAIO



126 TORTORA



003 VINACCIA



002 GRANATA

COMPOSITION: 100% Cotton / WEIGHT 680 gr/mtl

Accademia B

MADE IN ITALY



207 ARDESIA



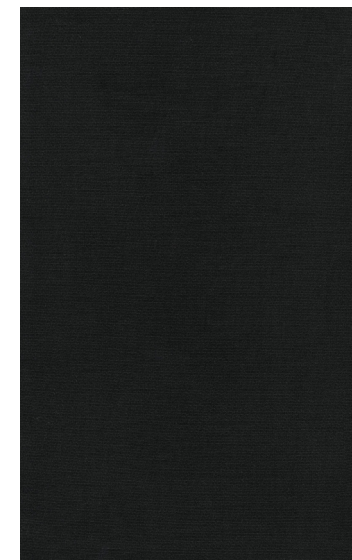
205 DENIM



206 AVIO



202 GRAFITE



014 NERO

COMPOSITION: 100% Cotton / WEIGHT 680 gr/mtl

POSSONO VERIFICARSI DIFFERENZE DI COLORE IN BASE AL MONITOR - COLOUR DIFFERENCED MAY OCCUR ACCORDING TO THE SCREEN TYPE

Albarella D

MADE IN ITALY



001 Cenere



003 Vaniglia



020 Grigio



011 Rosso



017 Oceano



016 Blu Notte



019 Piombo



009 Moka

COMPOSITION: 75% Cotton, 20%Acrylic, 5%Polyester / WEIGHT 780 gr/mtl

Capri F

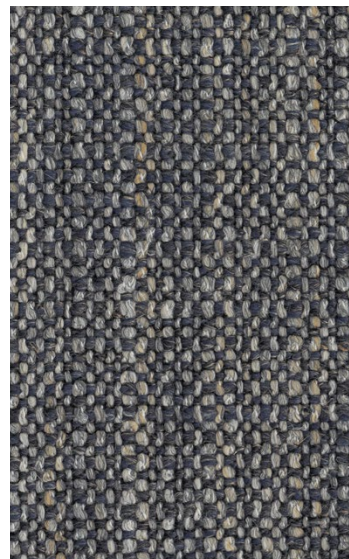
MADE IN ITALY



026 Argento



029 Bronzo



023 Avio



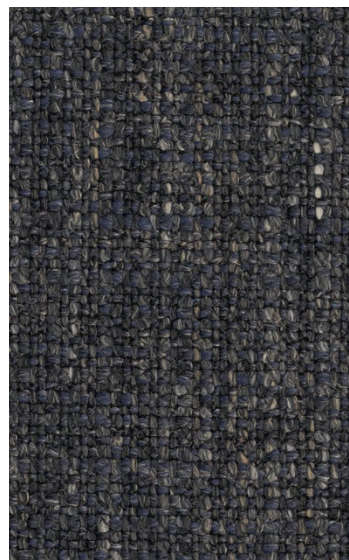
021 Ardesia



007 Acciaio



036 Tabacco



017 Notte



020 Antracite

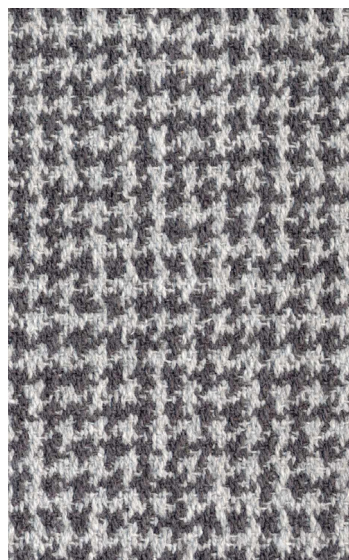
COMPOSITION: 56%Acrylic , 25%Polyester, 19%Linen / WEIGHT 707 gr/mtl

Cocò B

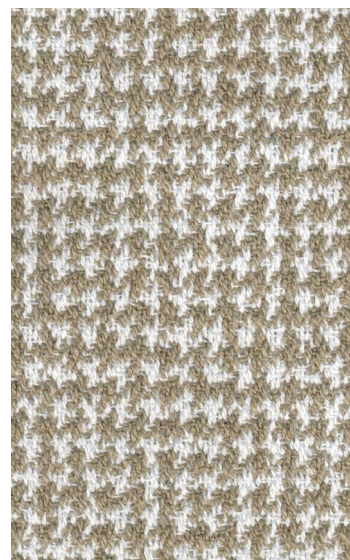
MADE IN ITALY



106 NUVOLA



108 ARGENTO



110 SABBIA



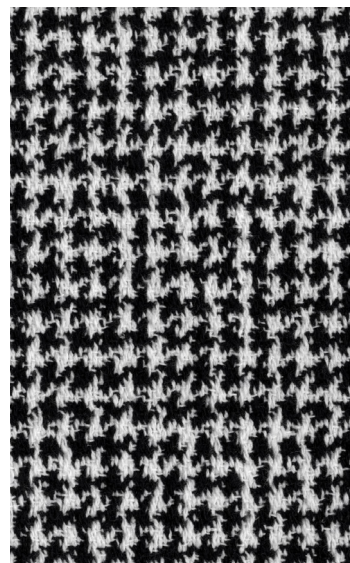
109 TORTORA



359 AVIO



360 ANTRACITE

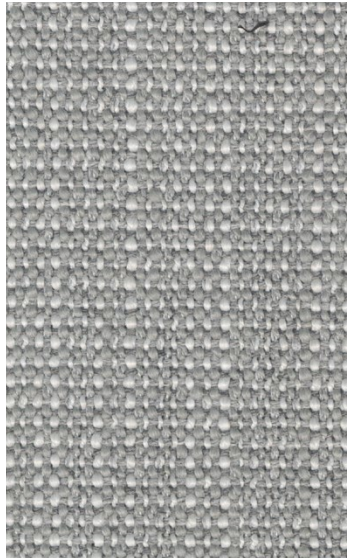


107 BIANCO/NERO

COMPOSITION: 80% Cotton, 20%Polyester / WEIGHT 780 gr/mtl

Elba D

MADE IN ITALY



001 Argento



002 Ecrù



004 Seppia



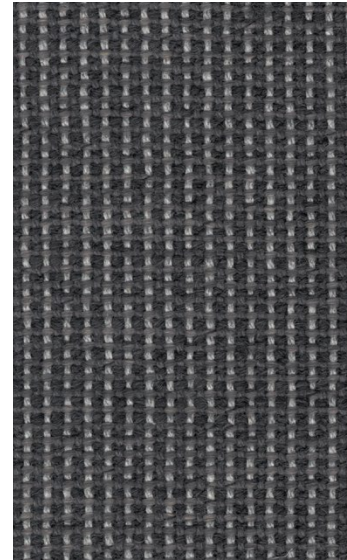
005 Oliva



011 Melanzana



021 Ardesia



012 Antracite



020 Carbone

COMPOSITION: 45%Cotton, 40%Acetate, 10%Polyester, 5%Other Fibers/ WEIGHT 802 gr/mtl

POSSONO VERIFICARSI DIFFERENZE DI COLORE IN BASE AL MONITOR - COLOUR DIFFERENCED MAY OCCUR ACCORDING TO THE SCREEN TYPE

Ducale D

MADE IN ITALY



001 BURRO



037 PERLA



023 VISONE



035 BISCOTTO



019 CIOCCOLATO



031 CENERE



030 ARDESIA



013 ACQUA



014 PETROLIO



010 BOSCO

COMPOSITION: 52%Viscose, 48%Cotton / WEIGHT 794 gr/mtl

Ducale D

MADE IN ITALY



009 AVIO



003 TERRACOTTA

COMPOSITION: 75% Cotton, 20%Acrylic, 5%Polyester / WEIGHT 780 gr/mtl

POSSONO VERIFICARSI DIFFERENZE DI COLORE IN BASE AL MONITOR - COLOUR DIFFERENCED MAY OCCUR ACCORDING TO THE SCREEN TYPE

Gemini D

MADE IN ITALY



002 Ghiaccio



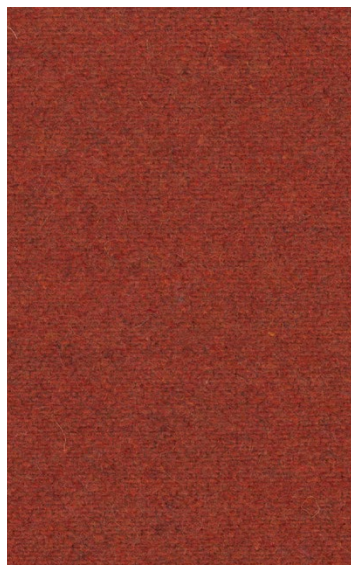
003 Sabbia



009 Tortora



010 Moka



012 Arancio



026 Malva



019 Porpora



021 Mogano

COMPOSITION: 20%Polyamide, 80%Wool / WEIGHT 490 gr/mtl

Gemini D

MADE IN ITALY



054 Acciaio



055 Ardesia



056 Antracite



057 Nero



048 Menta



050 Mare



049 Notte

COMPOSITION: 80%Wool, 20%Polyamide / WEIGHT 490 gr/mtl

Giglio F

MADE IN ITALY



701 Rosa



702 Glicine



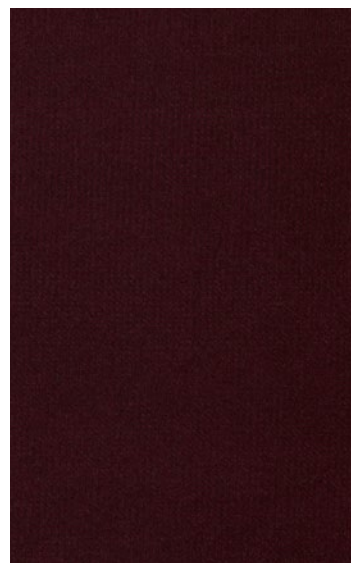
705 Ciclamino



704 Malva



707 Viola



202 Borgogna



401 Zucca



807 Ghiaccio



902 Crema



905 Biscotto

COMPOSITION: Pile 100% Cotton - Total 80% Cotton 10% Modal, 5% Polyester / WEIGHT 565 gr/mtl

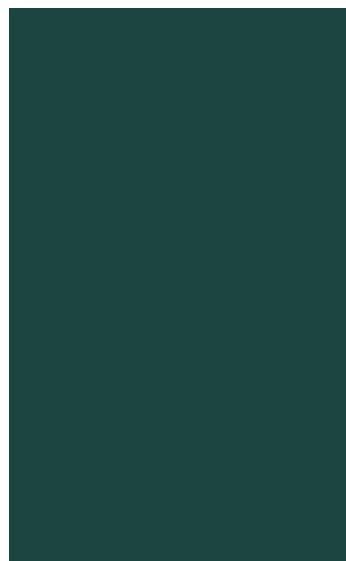
POSSONO VERIFICARSI DIFFERENZE DI COLORE IN BASE AL MONITOR - COLOUR DIFFERENCED MAY OCCUR ACCORDING TO THE SCREEN TYPE

Giglio F

MADE IN ITALY



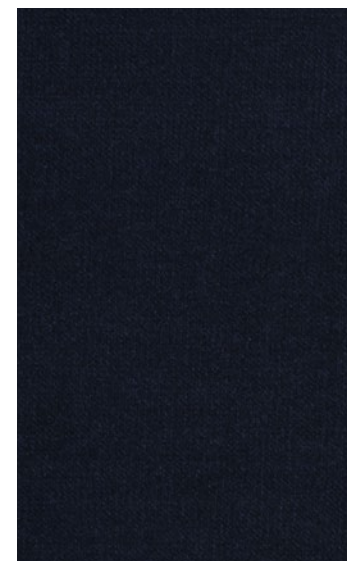
501 Oliva



408 Salvia



602 Cobalto



605 Pavone



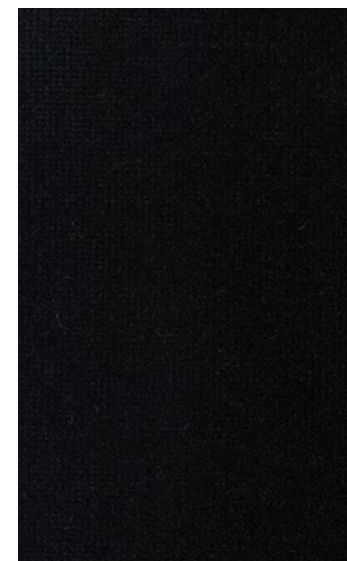
806 Nebbia



803 Acciaio



802 Piombo



800 Nero

COMPOSITION: Pile 100% Cotton - Total 80% Cotton 10% Modal, 5% Polyester / WEIGHT 565 gr/mtl

POSSONO VERIFICARSI DIFFERENZE DI COLORE IN BASE AL MONITOR - COLOUR DIFFERENCED MAY OCCUR ACCORDING TO THE SCREEN TYPE

Ischia F

MADE IN ITALY



001 Argento



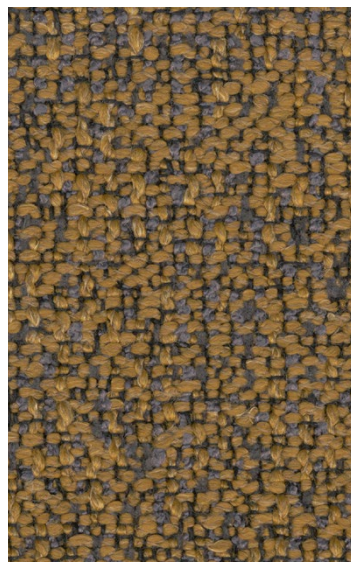
008 Cenere



002 Ardesia



009 Antracite



010 Senape



013 Oliva



035 Notte

COMPOSITION: 33%Acrylic, 29%Cotton, 22%Polyester, 8%Linen, 8%Viscose, / WEIGHT 950 gr/mtl

POSSONO VERIFICARSI DIFFERENZE DI COLORE IN BASE AL MONITOR - COLOUR DIFFERENCED MAY OCCUR ACCORDING TO THE SCREEN TYPE

Linosa B

MADE IN ITALY



032 Avorio



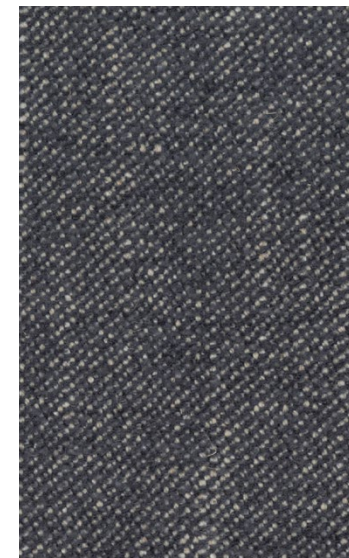
034 Titanio



004 Sabbia



019 Cobalto



101 Blu



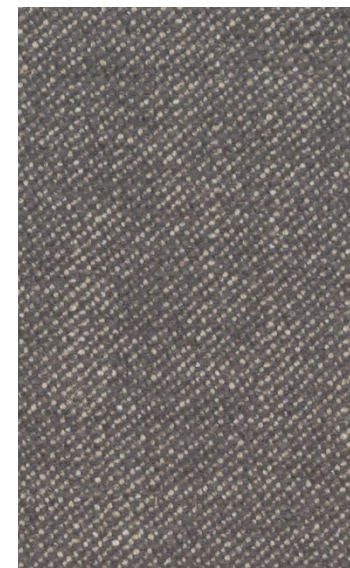
031 Rosa



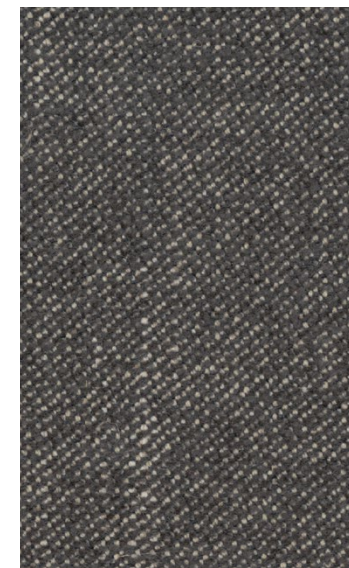
009 Malva



029 Salvia



023 Ardesia



001 Antracite

COMPOSITION: 44%Cotton, 27%Viscose, 23%Acrylic, 6%Linen / WEIGHT 680 gr/mtl

POSSONO VERIFICARSI DIFFERENZE DI COLORE IN BASE AL MONITOR - COLOUR DIFFERENCED MAY OCCUR ACCORDING TO THE SCREEN TYPE

Nisida D

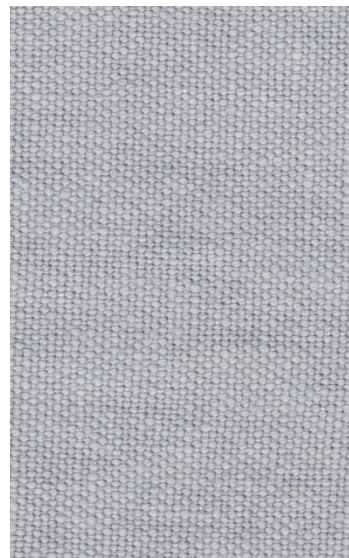
MADE IN ITALY



001 Bianco



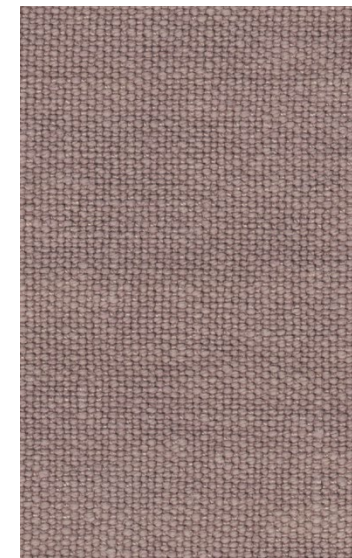
002 Panna



044 Perla



105 Acqua



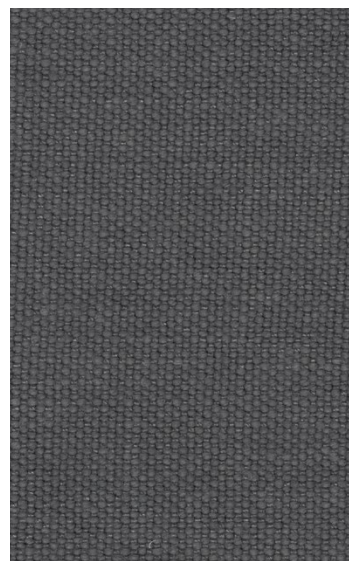
106 Cipria



004 Corda



101 Cenere



103 Ardesia



116 Fumo



129 Blu

COMPOSITION: 100%Linen / WEIGHT 650 gr/mtl

Panarea F

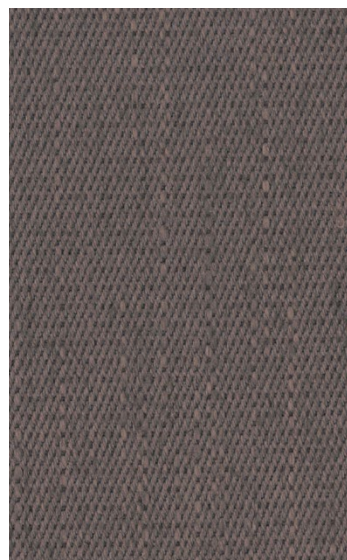
MADE IN ITALY



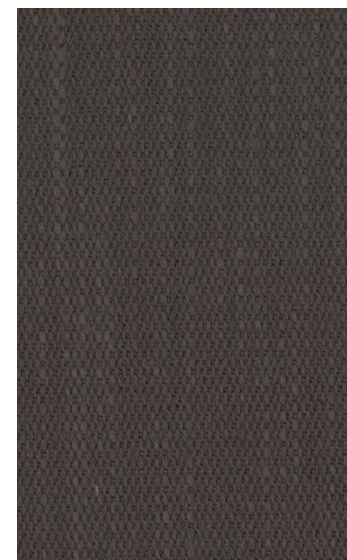
029 Ottico



056 Visone



020 Tortora



011 Terra



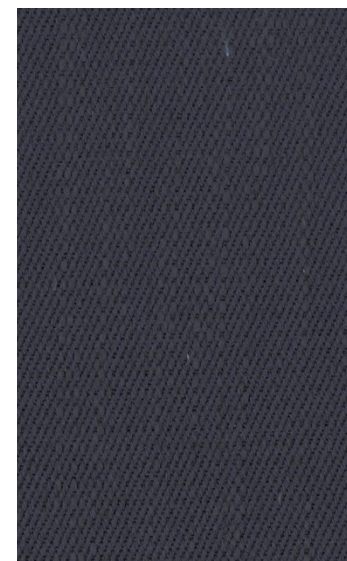
038 Cipria



007 Pirite



027 Avio



010 Blu

COMPOSITION: 14%Polyester, 16%Linen, 34%Viscose, 30%Cotton / WEIGHT 630 gr/mtl

Panarea F

MADE IN ITALY



008 Cenere



053 Pietra



054 Fumo

COMPOSITION: 34%Viscose, 30%Cotton, 16%Linen, 14%Polyester / WEIGHT 630 gr/mtl

POSSONO VERIFICARSI DIFFERENZE DI COLORE IN BASE AL MONITOR - COLOUR DIFFERENCED MAY OCCUR ACCORDING TO THE SCREEN TYPE

Vignole B

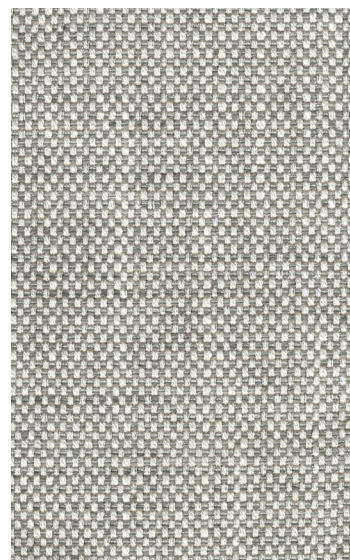
MADE IN ITALY



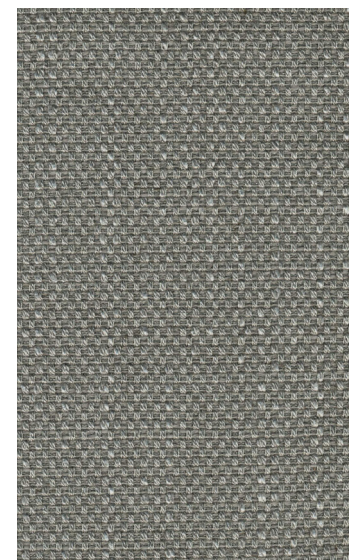
040 BIANCO



020 TITANIO



041 ARGENTO



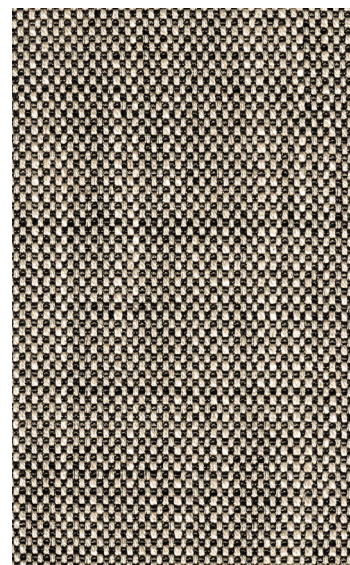
060 CENERE



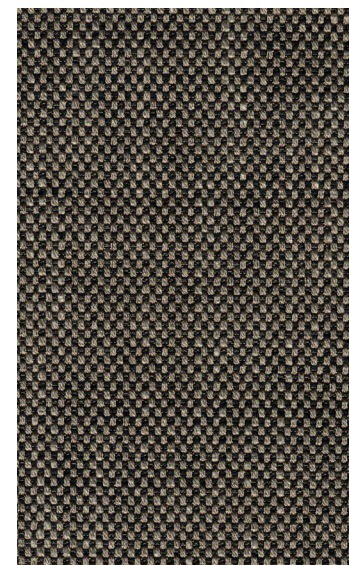
042 AVORIO



014 SEPPIA



001 QUARZO



071 FANGO

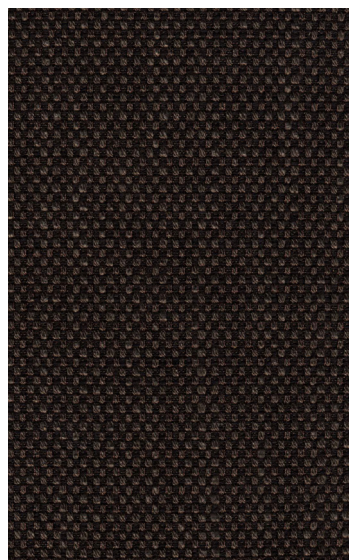
COMPOSITION: 67%Viscose, 18%Cotton, 15%Linen / WEIGHT 725 gr/mtl

Vignole B

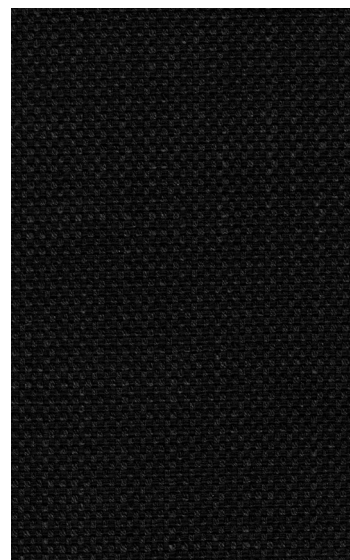
MADE IN ITALY



011 ARDESIA



051 MOKA



010 NERO

COMPOSITION: 67%Viscose, 18%Cotton, 15%Linen / WEIGHT 725 gr/mtl

POSSONO VERIFICARSI DIFFERENZE DI COLORE IN BASE AL MONITOR - COLOUR DIFFERENCED MAY OCCUR ACCORDING TO THE SCREEN TYPE

Deco' - Murano H

MADE IN ITALY



001 Corda



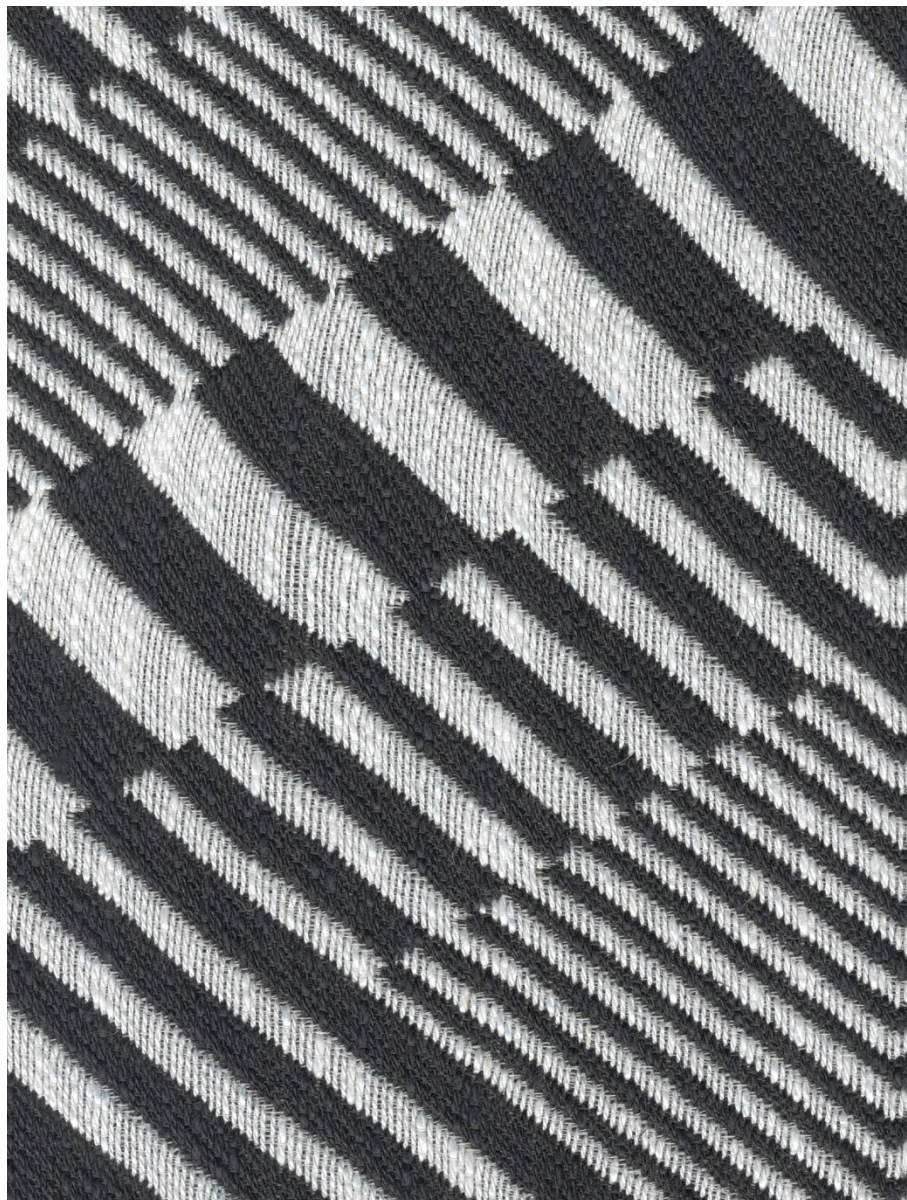
004 Fumo

COMPOSITION: 59%Polyester , 41%Viscose / WEIGHT 680 gr/mtl

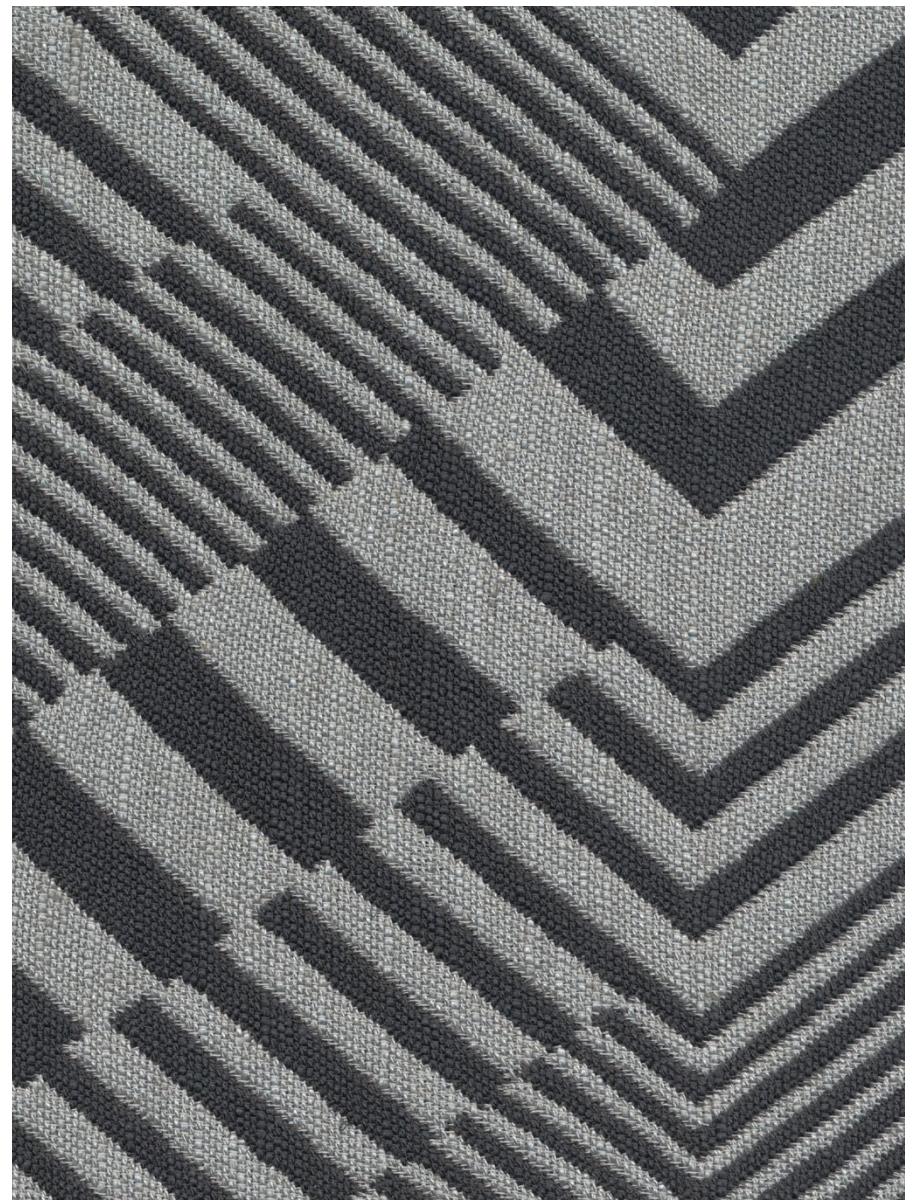
Deco' - Lipari F

MADE IN ITALY

ITALIALOUNGE



221 Bianco



710 Grigio

COMPOSITION: 60%Viscose, 20%Linen, 10%Cotton, 5%Nylon, 3%Polyester, 2%Silk / WEIGHT 900 gr/mtl

POSSONO VERIFICARSI DIFFERENZE DI COLORE IN BASE AL MONITOR - COLOUR DIFFERENCED MAY OCCUR ACCORDING TO THE SCREEN TYPE

Deco' - Palomba F

MADE IN ITALY



001 Bianco



004 Grigio

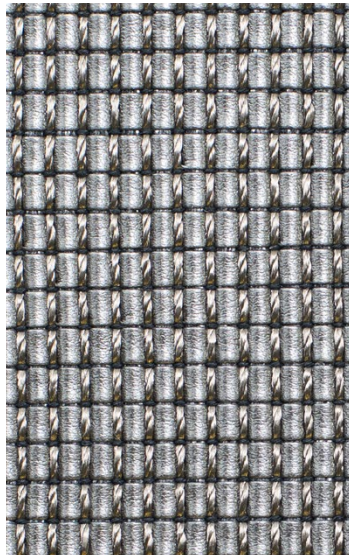


006 Nero

COMPOSITION: 46%Viscose, 27%Cotton, 16%Polyster, 11%Linen / WEIGHT 830 gr/mtl

Decò D25

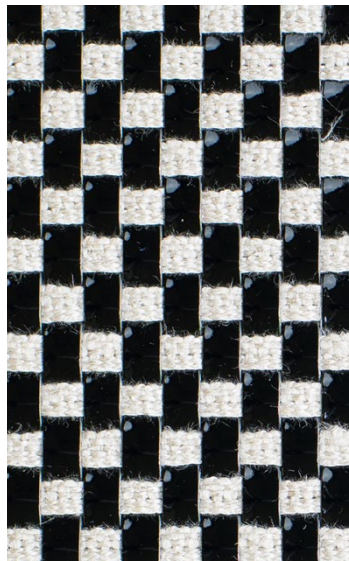
MADE IN ITALY



Alpha 001 Acciaio

COMPOSITION:
34% Cotton
33% Polyester
21% Polyurethane
9% Acrylic
2% Viscose
1% Other Fibres

WEIGHT 1215 gr/mtl
BACKING:
100% Polypropylene



Gamma 001 Corda/Nero

FABRIC
100% Linen

IMITATION LEATHER
80% Polyurethane
20% Polyester

WEIGHT 1000 gr/mtl
BACKING:
100% Polypropylene

Decò D50



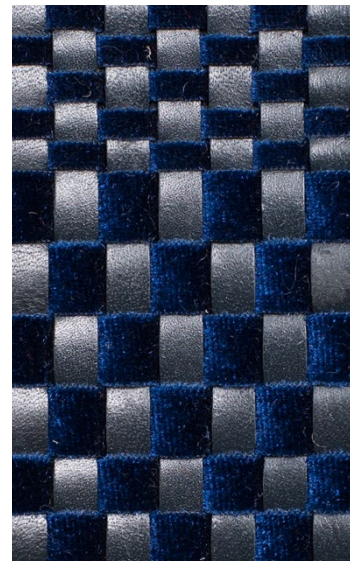
Antares 001 Cuio



Antares 003 Moka

LEATHER
ORIGIN Bovine
QUALITY Full grain
FINISHING Aniline dyed
MODE OF TANNING Chrome

BACKING:
100% Polypropylene



Mizar 007 Blu

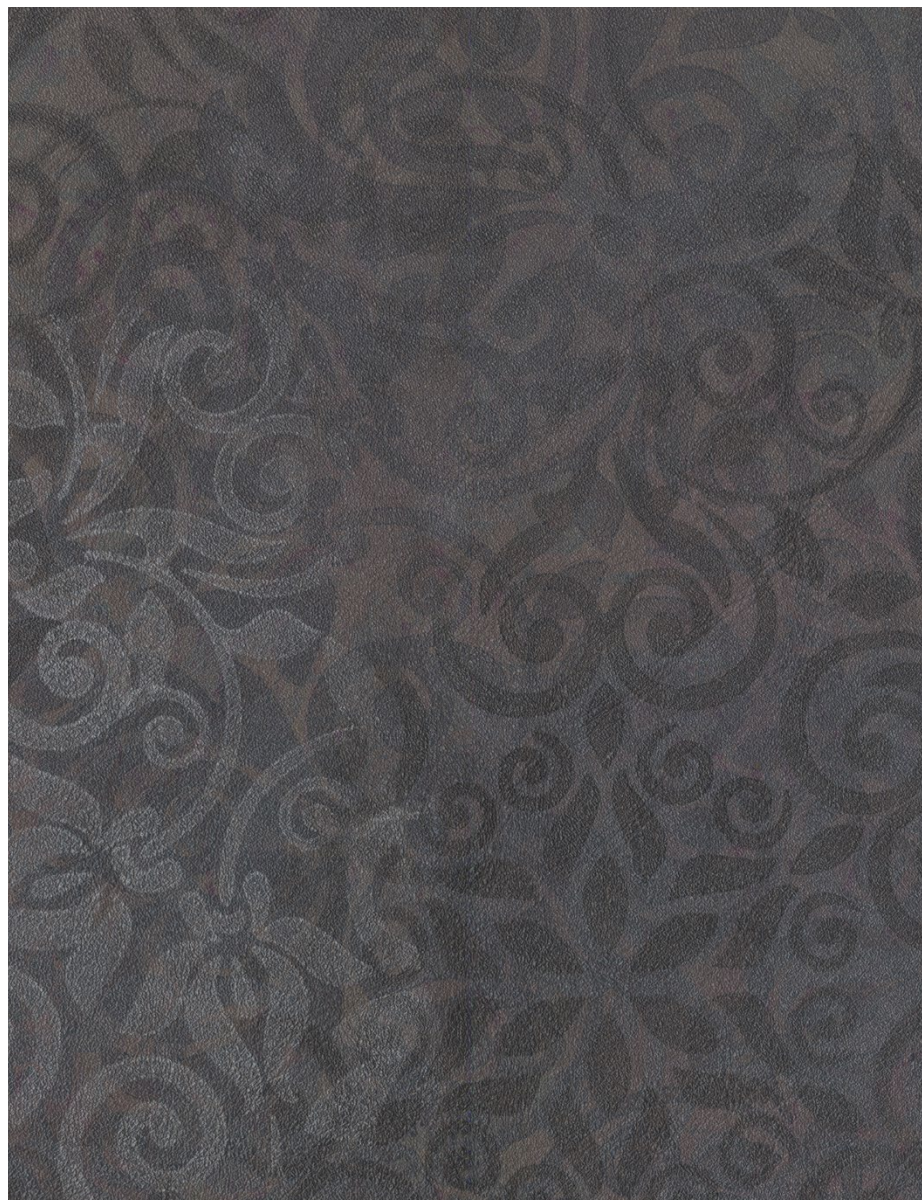
FABRIC
VELVET 100% Polyester

LEATHER
ORIGIN Bovine
QUALITY Full grain
FINISHING Aniline dyed
MODE OF TANNING Chrome

BACKING:
100% Polypropylene

Decò D25

MADE IN ITALY



Astra 001 Quarzo



Astra 002 Grafite

ORIGIN Bovine / QUALITY Full grain / FINISHING Printed artisan / MODE OF TANNING Chrome / THICKNESS 0.9/1.1 mm

POSSONO VERIFICARSI DIFFERENZE DI COLORE IN BASE AL MONITOR - COLOUR DIFFERENCED MAY OCCUR ACCORDING TO THE SCREEN TYPE

MANUTENZIONE TESSUTO

I nostri rivestimenti sono stati scelti con cura per garantire qualità, durata e per una appropriata resa estetica.

SMACCHIATURA DEL TESSUTO

In caso di macchie **rimuovere lo sporco immediatamente**, tamponando con un panno pulito e morbido. **Evitare di strofinare** il tessuto in quanto potrebbe provocare una modifica dell'aspetto (alterazione della fibra, scoloritura, etc.) Nel caso di utilizzo di acqua, detersivi o gomma per cancellare, **agire sempre dopo aver fatto una prova su una parte nascosta o poco visibile.**

Non far uso di acqua e detersivi per smacchiare il tessuto da lavare a secco. Attenersi alle istruzioni riportate.

Con una soluzione di 1/3 d'acqua, 1/3 d'alcool a 90°, 1/3 di aceto bianco, agire con una spugna sulla macchia asportandola con leggeri movimenti circolari. Prima di lasciare asciugare, eliminare i residui dei prodotti utilizzati, applicare acqua fredda e infine asciugare con uno straccio. Lasciare asciugare, spazzolare con una spazzola morbida.

Nel caso di macchia di seborrea (grasso di capelli) può verificarsi una leggera decolorazione dopo la smacchiatura, dovuta generalmente agli strofinamenti della testa contro il divano e all'aggressività del sebo del cuoio capelluto.

GOMMA DA MASTICARE, CERA DI CANDELA

Raffreddare la macchia con del ghiaccio, avvolto in un cellophane, quindi rimuoverla delicatamente. Qualora rimanesse traccia rimuoverla con una gomma per cancellare di tipo morbido.

FANGO, POLVERE SECCA, LATTE, SANGUE, URINA, SUDORE

Una soluzione di 70% di acqua con 30% di ammoniaca va applicata con una spugna asportando la macchia, sciacquare, asciugare con uno straccio tamponando. Se necessario ripetere l'operazione. Lasciare asciugare, spazzolare con una spazzola morbida.





















BURRO, CIBI GRASSI, OLIO, CERA, ROSSETTO, PENNA, INCHIOSTRO

Applicare alcol a 90° o solvente clorato con uno straccio pulito tamponando senza strofinare. Sciacquare, asciugare con uno straccio tamponando. Se necessario ripetere l'operazione. Lasciare asciugare, spazzolare con una spazzola morbida.

BIRO, LUCIDO DA SCARPE, GOMMA DA MASTICARE

Tamponare con tessuto assorbente impregnato di alcol etilico 90° o di essenza trementina (acqua ragia minerale).

Per i rivestimenti **Decò** in pelle consultare la scheda di MANUTENZIONE PELLE.

SIMBOLOGIA DI MANUTENZIONE					
LAVAGGIO					
	lavare in acqua max 40° C	lavare in acqua max 30° C	lavare solo a mano max 30° C non torcere	non lavare in acqua	
	LAVAGGIO A SECCO				
		lavaggio a secco solo con Percloroetilene	Permesso qualsiasi agente candeggiante ossidante	lavabile con tutti i solventi utilizzati per il lavaggio a secco	non lavare a secco non smacchiare con solventi
SMACCHIATURA					
		candeggio al cloro solo a freddo in soluzione diluita	permesso qualsiasi candeggiante ossidante	non candeggiare	non candeggiare al cloro
	ASCIUGATURA				
		asciugatura appeso	asciugatura per gocciolamento	asciugare a tamburo a temperatura ridotta	non asciugare a tamburo rotativo
STIRATURA					
		stirare a bassa temperatura senza vapore	stirare a temperatura max di 150°C	stirare a temperatura max di 200°C	non stirare

FABRIC MAINTENANCE

Our Upholsteries have been carefully chosen to guarantee quality, durability and an appropriate aesthetic result.

STAIN REMOVAL OF THE FABRIC

In case of stains **remove the dirt immediately**, dabbing with a clean and soft cloth. **Avoid rubbing** the fabric as it could causing a change of appearance (fibre alteration, discoloration, etc.)

In case you decide to use water, detergents or erasers, **previously make a test on a hidden or low visible part of the sofa.**

Do not use water and detergents to clean fabrics that require dry cleaning. Follow the given instructions.

With a solution made of 1/3 of water, 1/3 of alcohol at 90 °, 1/3 of white vinegar, swab with a sponge trying to remove the stain with soft circular movements.

Before it dries, remove the residues of the products used with cold water and then dry with a cloth. Allow it to dry up completely, brush it very softly.

In the case of seborrhoea halos a slight discoloration may occur after stain removal, generally due to the head rubbing against the sofa and to the aggressiveness of the scalp sebum.

CHEWING RUBBER, CANDLE WAX

Cool the stain with ice, wrapped in cellophane, then remove it gently. If there is still a trace, remove it with a soft eraser.

MUD, DRY POWDER, MILK, BLOOD, URINE, SWEET

A solution of 70% water with 30% ammonia should be applied with a sponge removing the stain, rinse and dry with a damp cloth. If necessary repeat the operation. Allow to dry completely and brush softly.


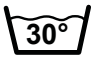


















BUTTER, FAT FOOD, OIL, WAX, LIPSTICK, PEN, INK

Apply 90 ° alcohol or chlorinated solvent with a clean cloth, dab gently avoid rubbing. Rinse, dry with a clean cloth. If necessary, repeat the operation. Allow it to dry up completely, brush softly.

BALLPOINT PEN, SHOES CREAM, CEWING GUM

Dab with absorbent fabric impregnated with 90 ° ethyl alcohol or turpentine essence (white spirit).

For **Decò** leather upholsteries, consult the SKIN MAINTENANCE sheet.

MAINTENANCE SYMBOLS				
LAVAGGIO HAND WASH	 hand wash at a maximum 40°C	 hand wash at a maximum 30°C	 hand wash at a max 30°C do not wring out	 do not wash in water
LAVAGGIO A SECCO DRY CLEANING	 dry-clean only in Perchloroethylene	 permit any agendas oxidizing bleach	 washable wholehearted the solvents used for dry cleaning	 do not dry-clean do not remove stains with solvents
SMACCHIATURA STAIN REMOVAL	 chlorine bleaching only cold dilute solution	 permit any oxidizing bleach	 non candeggiare do not chlorine bleach	 non candeggiare al cloro non-chlorine bleach
ASCIUGATURA DRYING	 asciugatura appeso drying hanging	 drip dry	 tumble dry low heat	 do not tumble dry
STIRATURA IRONING	 iron at low temperatures without steam	 iron at temperatures not exceeding 150°C	 iron at temperatures not exceeding 200°C	 do not iron