

Ditre Italia Products

2023

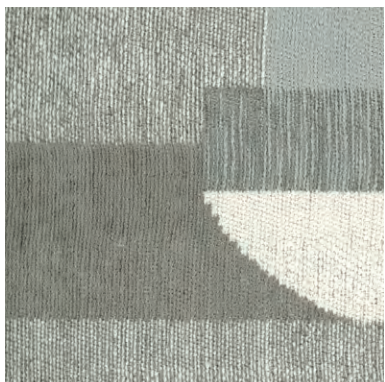
—

# Tessuti *Fabrics*

**DITRE**  
**italia**

CAT. U

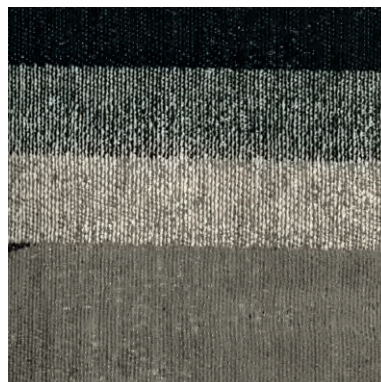
# Uniform



UNIFORM 002



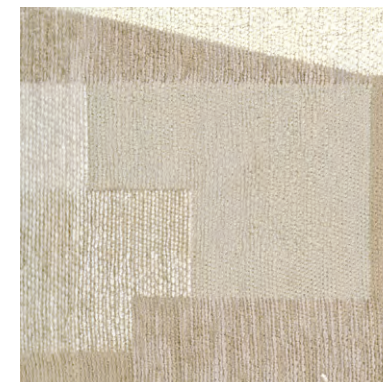
UNIFORM 005



UNIFORM 008



UNIFORM 010



UNIFORM 014



UNIFORM 018

## INFORMAZIONI TECNICHE / TECHNICAL INFORMATION

Composizione / composition	77% VI - 23% PL
Martindale / martindale	25.000 cicli/cycles
Pilling / Pilling	4

## MANUTENZIONE / MAINTENANCE



CAT. U

## Unique



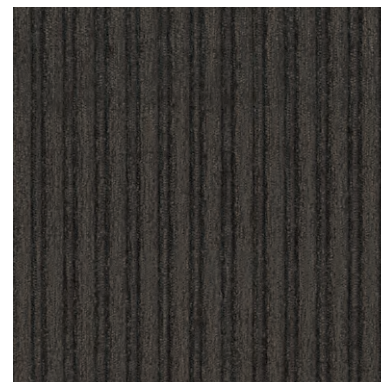
UNIQUE 101



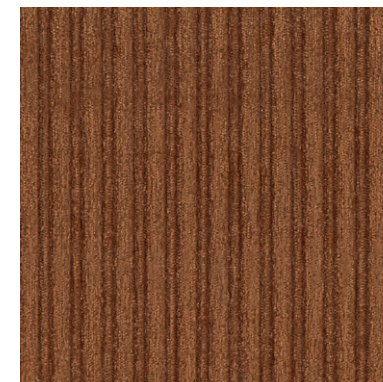
UNIQUE 102



UNIQUE 103



UNIQUE 104



UNIQUE 105



UNIQUE 106

### INFORMAZIONI TECNICHE / TECHNICAL INFORMATION

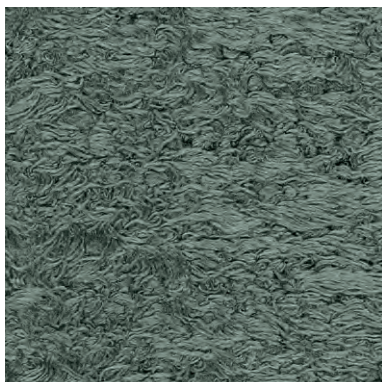
Composizione / composition	39% PL - 39% CO - 22%PC
Martindale / martindale	20.000 cicli/cycles
Pilling / Pilling	3/4

### MANUTENZIONE / MAINTENANCE



CAT. U

# Uber



UBER 001



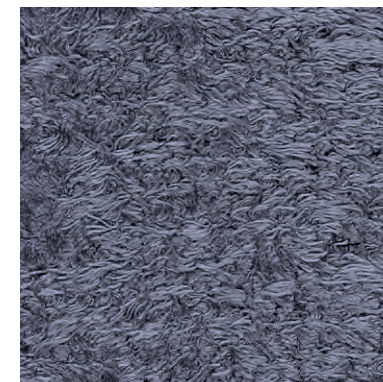
UBER 004



UBER 005



UBER 006



UBER 007



UBER 010



UBER 011



UBER 013



UBER 014



UBER 015

## INFORMAZIONI TECNICHE / TECHNICAL INFORMATION

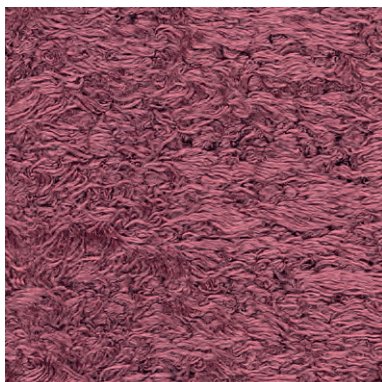
Composizione / composition	59% PC - 41% PL
Martindale / martindale	30.000 cicli/cycles
Pilling / Pilling	3/4

## MANUTENZIONE / MAINTENANCE



CAT. U

## Uber



UBER 016



UBER 017



UBER 021



UBER 023



UBER 024

### INFORMAZIONI TECNICHE / TECHNICAL INFORMATION

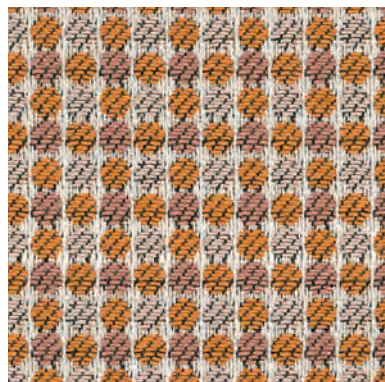
Composizione / composition	59% PC - 41% PL
Martindale / martindale	30.000 cicli/cycles
Pilling / Pilling	3/4

### MANUTENZIONE / MAINTENANCE

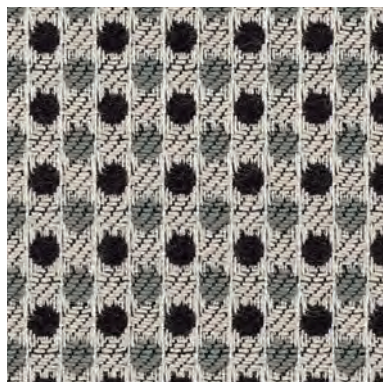


CAT. T

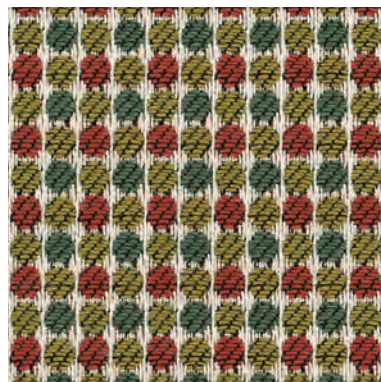
# Twist



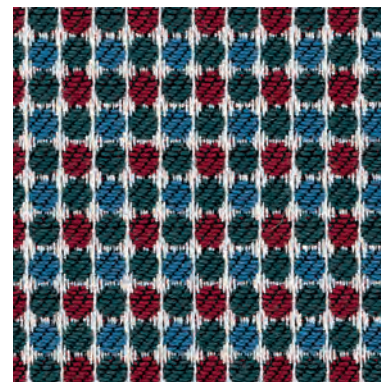
TWIST 05



TWIST 07



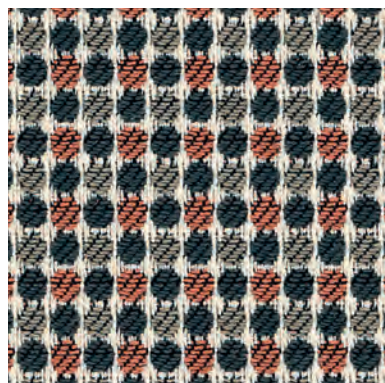
TWIST 09



TWIST 10



TWIST 11



TWIST 12

## INFORMAZIONI TECNICHE / TECHNICAL INFORMATION

Composizione / composition

77% VI - 23% PL

Martindale / martindale

20.000 cicli/cycles

Pilling / Pilling

4

## MANUTENZIONE / MAINTENANCE





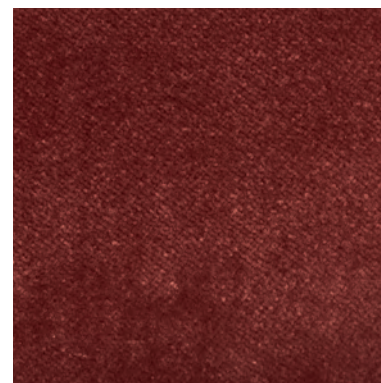
TWIN 001



TWIN 002



TWIN 004



TWIN 007



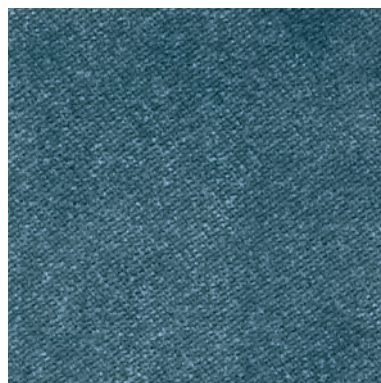
TWIN 008



TWIN 009



TWIN 011



TWIN 012



TWIN 013



TWIN 017

### INFORMAZIONI TECNICHE / TECHNICAL INFORMATION

Composizione / composition	100% RPL
Martindale / martindale	50.000 cicli/cycles
Pilling / Pilling	4



Eco-Friendly

### MANUTENZIONE / MAINTENANCE





TWIN 018



TWIN 020

**INFORMAZIONI TECNICHE / TECHNICAL INFORMATION**

Composizione / composition	100% RPL
Martindale / martindale	50.000 cicli/cycles
Pilling / Pilling	4

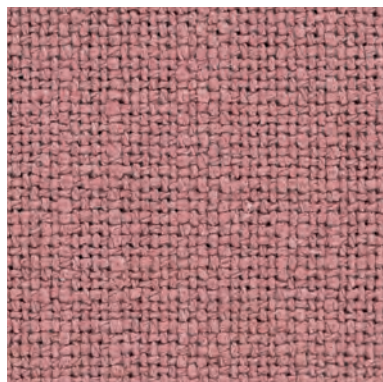
 Eco-Friendly

**MANUTENZIONE / MAINTENANCE**





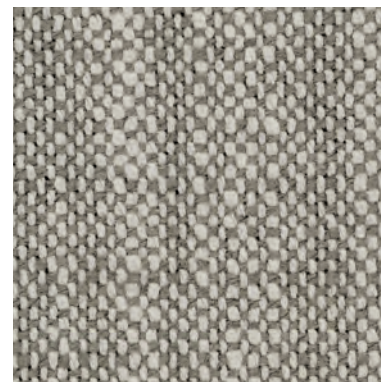
TRUST 503



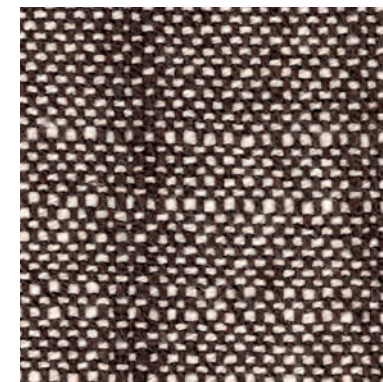
TRUST 512



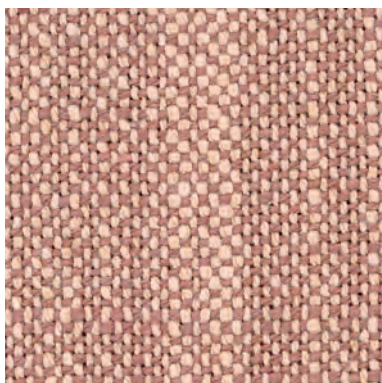
TRUST 601



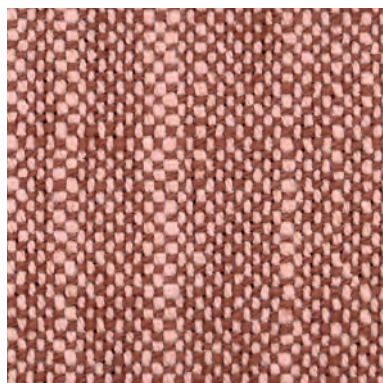
TRUST 605



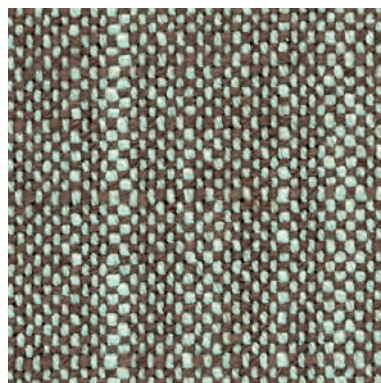
TRUST 607



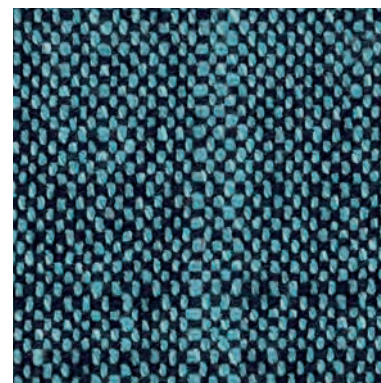
TRUST 611



TRUST 615



TRUST 619



TRUST 690

### INFORMAZIONI TECNICHE / TECHNICAL INFORMATION

Composizione / composition	80% RCO - 20% PL
Martindale / martindale	55.000 cicli/cycles
Pilling / Pilling	3/4



### MANUTENZIONE / MAINTENANCE



CAT. T

## Trend



TREND 001



TREND 002



TREND 003



TREND 004



TREND 010



TREND 011



TREND 033



TREND 034



TREND 035



TREND 039

### INFORMAZIONI TECNICHE / TECHNICAL INFORMATION

Composizione / composition	55% VI - 45% CO
Martindale / martindale	50.000 cicli/cycles
Pilling / Pilling	4

### MANUTENZIONE / MAINTENANCE



CAT. T

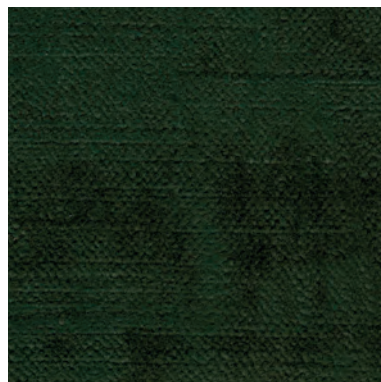
## Trend



TREND 044



TREND 052



TREND 068



TREND 088



TREND 231



TREND 232



TREND 233



TREND 234

### INFORMAZIONI TECNICHE / TECHNICAL INFORMATION

Composizione / composition	55% VI - 45% CO
Martindale / martindale	50.000 cicli/cycles
Pilling / Pilling	4

### MANUTENZIONE / MAINTENANCE



CAT. T

# Travel



TRAVEL 701



TRAVEL 702



TRAVEL 703



TRAVEL 705



TRAVEL 706



TRAVEL 707

## INFORMAZIONI TECNICHE / TECHNICAL INFORMATION

Composizione / composition	54% VI - 38% CO - 8% PL
Martindale / martindale	25.000 cicli/cycles
Pilling / Pilling	4

## MANUTENZIONE / MAINTENANCE



CAT. T

# Time



TIME 007



TIME 010



TIME 024



TIME 029



TIME 035



TIME 036

## INFORMAZIONI TECNICHE / TECHNICAL INFORMATION

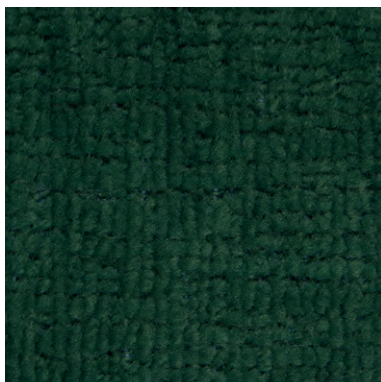
Composizione / composition	49% PC - 14% CO - 14% PL - 23% LI
Martindale / martindale	>35.000 cicli/cycles
Pilling / Pilling	4

## MANUTENZIONE / MAINTENANCE

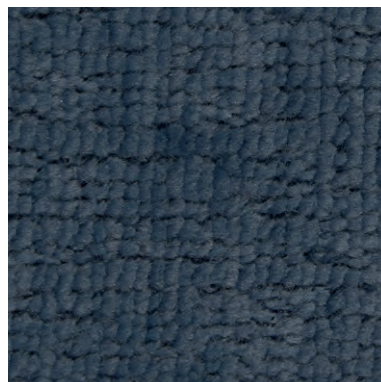




TEXAS 004



TEXAS 008



TEXAS 011



TEXAS 013



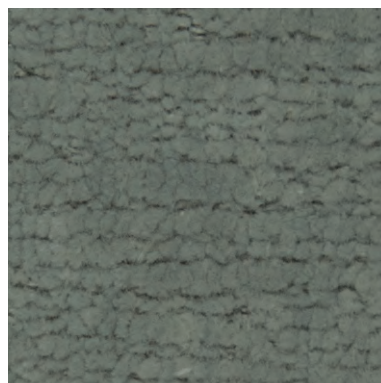
TEXAS 015



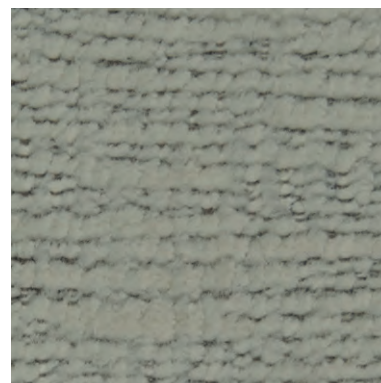
TEXAS 016



TEXAS 018



TEXAS 022



TEXAS 023



TEXAS 025

#### INFORMAZIONI TECNICHE / TECHNICAL INFORMATION

Composizione / composition	72 % RPET - 28% PL
Martindale / martindale	60.000 cicli/cycles
Pilling / Pilling	5



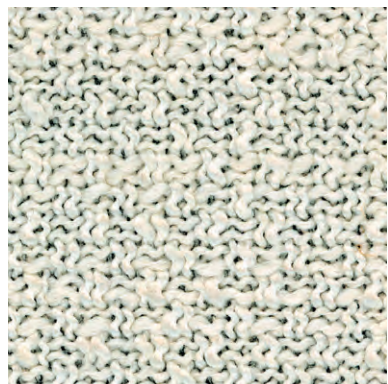
Eco-Friendly

#### MANUTENZIONE / MAINTENANCE



CAT. T

# Task



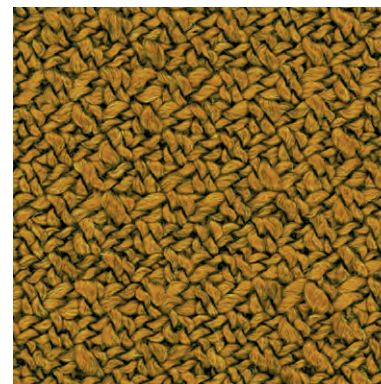
TASK 101



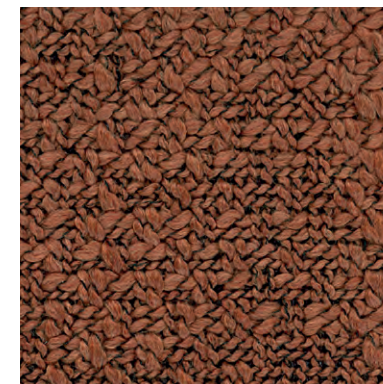
TASK 104



TASK 105



TASK 106



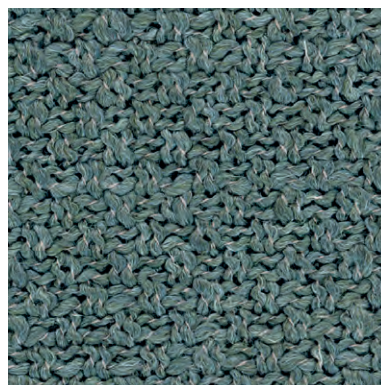
TASK 108



TASK 110



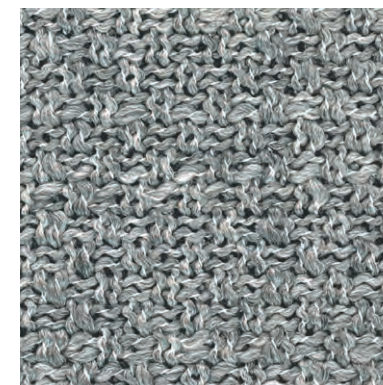
TASK 111



TASK 114



TASK 115



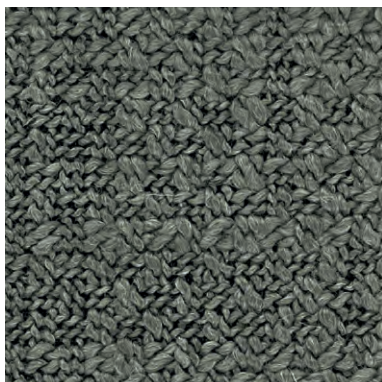
TASK 116

## INFORMAZIONI TECNICHE / TECHNICAL INFORMATION

Composizione / composition	45% PC - 25% PL - 22% CO - 8% WO
Martindale / martindale	30.000 cicli/cycles
Pilling / Pilling	4

## MANUTENZIONE / MAINTENANCE





TASK 117



TASK 118

**INFORMAZIONI TECNICHE / TECHNICAL INFORMATION**

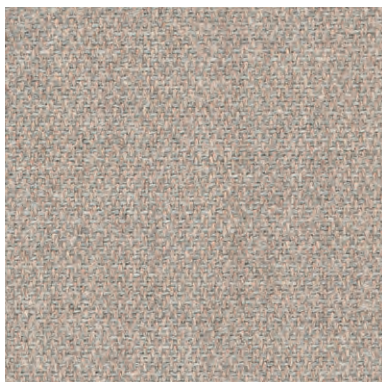
Composizione / composition	45% PC - 25% PL - 22% CO - 8% WO
Martindale / martindale	30.000 cicli/cycles
Pilling / Pilling	4

**MANUTENZIONE / MAINTENANCE**

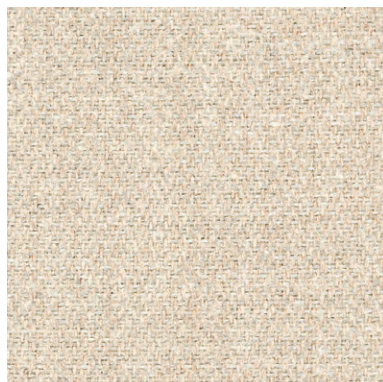


CAT. T

# Tallin



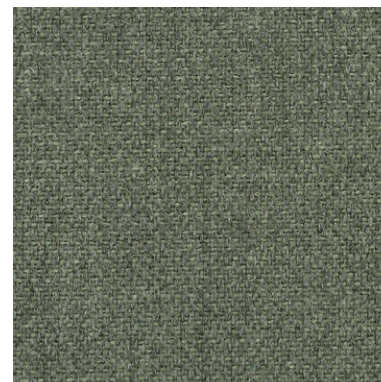
TALLIN 04



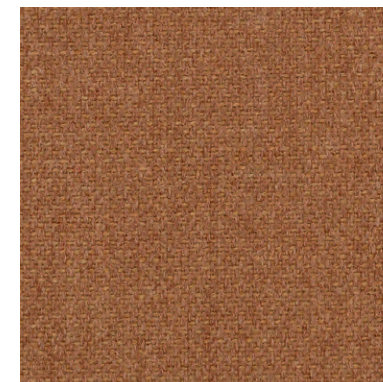
TALLIN 05



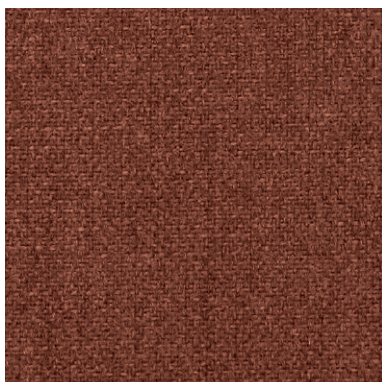
TALLIN 06



TALLIN 11



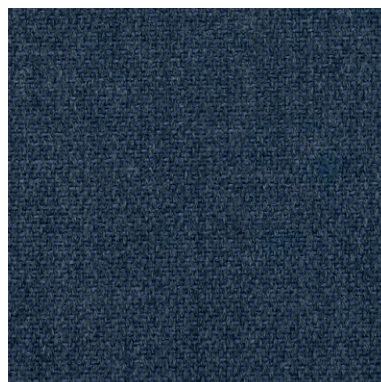
TALLIN 14



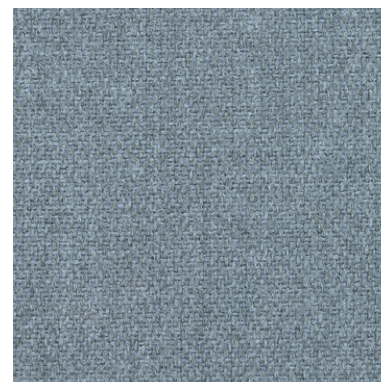
TALLIN 15



TALLIN 016



TALLIN 18



TALLIN 20



TALLIN 21

## INFORMAZIONI TECNICHE / TECHNICAL INFORMATION

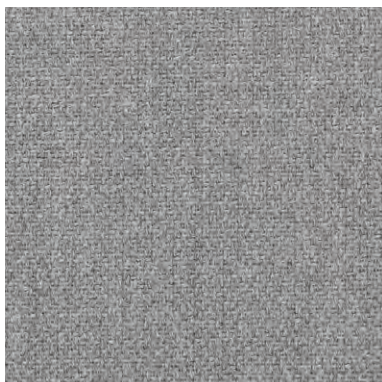
Composizione / composition	90% CO - 10% PL
Martindale / martindale	30.000 cicli/cycles
Pilling / Pilling	3/4

## MANUTENZIONE / MAINTENANCE

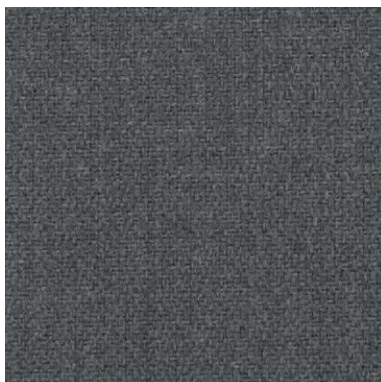


CAT. T

# Tallin



TALLIN 22



TALLIN 23

## INFORMAZIONI TECNICHE / TECHNICAL INFORMATION

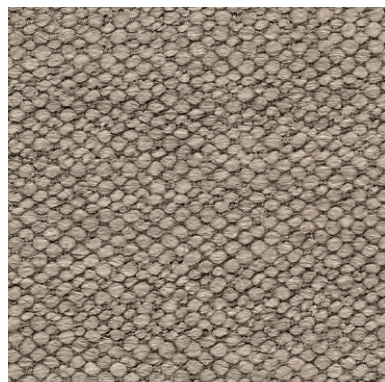
Composizione / composition	90% CO - 10% PL
Martindale / martindale	30.000 cicli/cycles
Pilling / Pilling	3/4

## MANUTENZIONE / MAINTENANCE



CAT. T

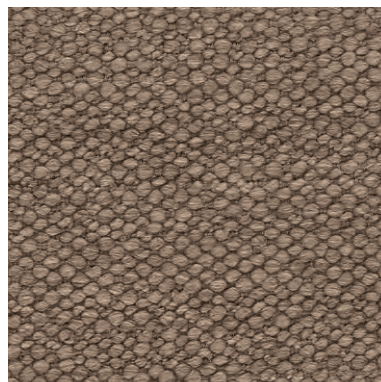
## Tape



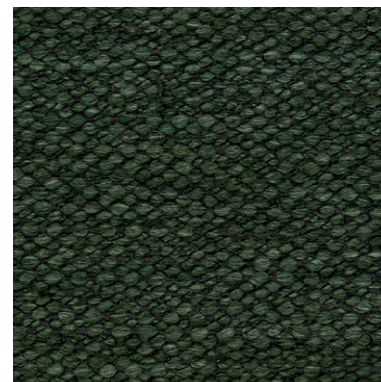
TAPE 304



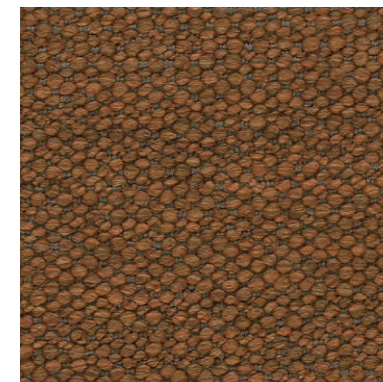
TAPE 305



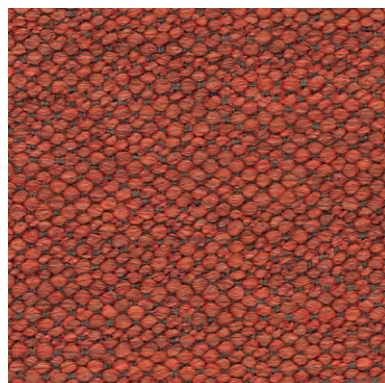
TAPE 306



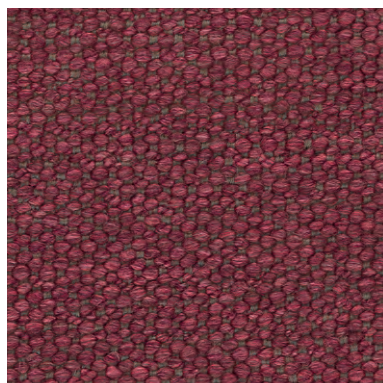
TAPE 311



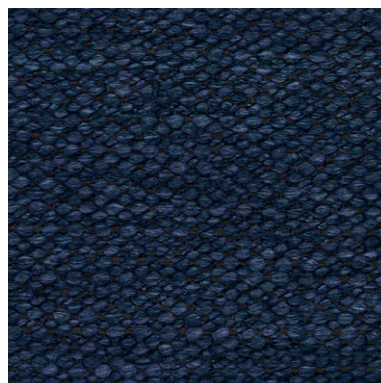
TAPE 314



TAPE 315



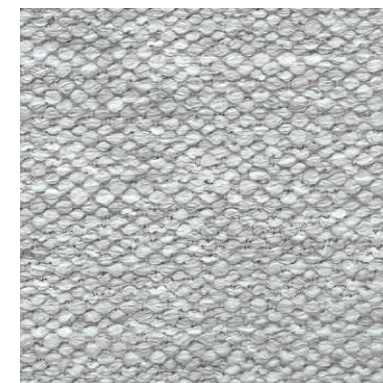
TAPE 316



TAPE 318



TAPE 320



TAPE 321

### INFORMAZIONI TECNICHE / TECHNICAL INFORMATION

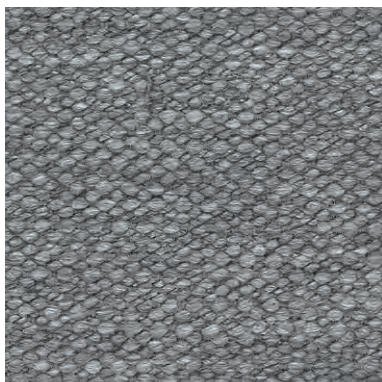
Composizione / composition	49% PC - 23% PL - 23% VI - 5% CO
Martindale / martindale	30.000 cicli/cycles
Pilling / Pilling	3/4

### MANUTENZIONE / MAINTENANCE

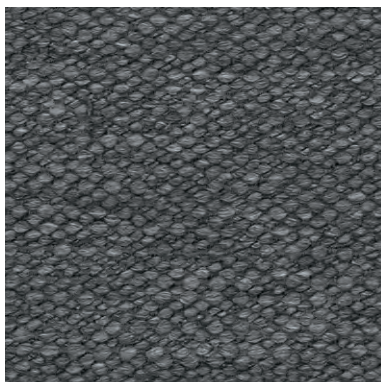


CAT. T

# Tape



TAPE 322



TAPE 323

## INFORMAZIONI TECNICHE / TECHNICAL INFORMATION

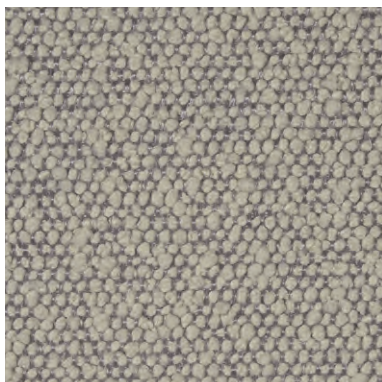
Composizione / composition	49% PC - 23% PL - 23% VI - 5% CO
Martindale / martindale	30.000 cicli/cycles
Pilling / Pilling	3/4

## MANUTENZIONE / MAINTENANCE

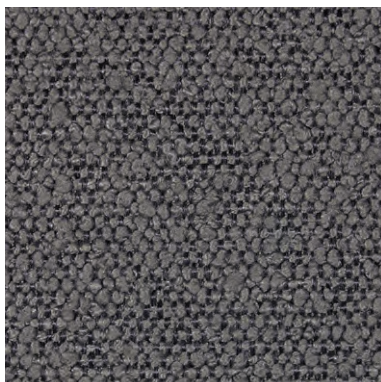


CAT. P

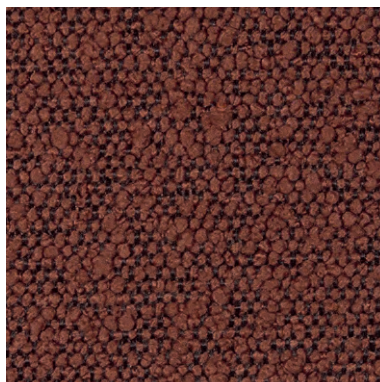
## Princess



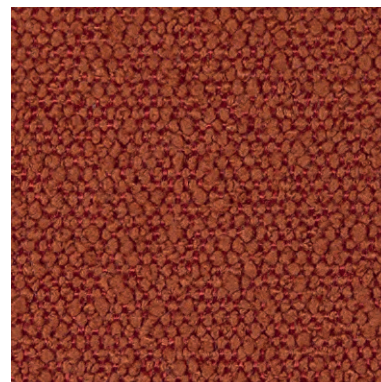
PRINCESS 901



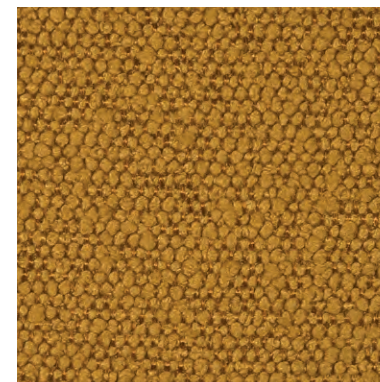
PRINCESS 101



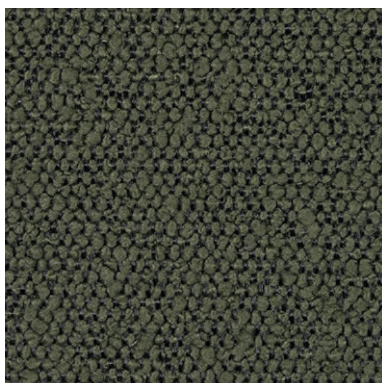
PRINCESS 300



PRINCESS 304



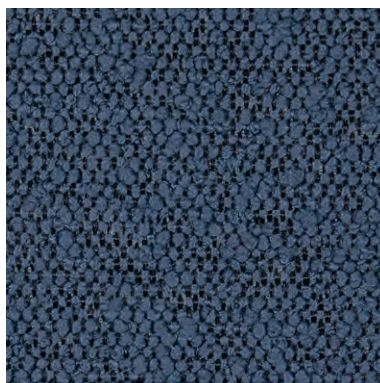
PRINCESS 400



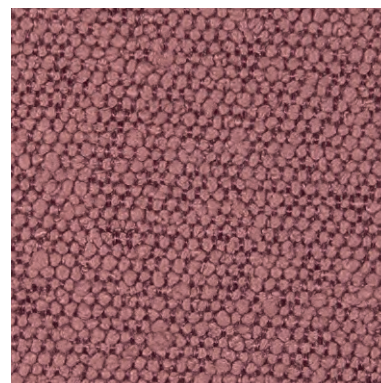
PRINCESS 502



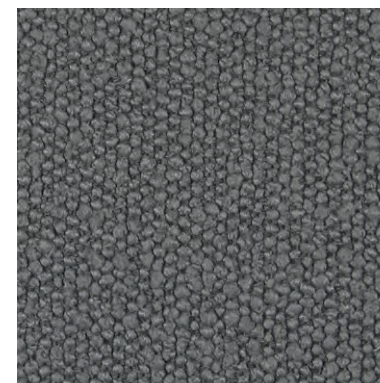
PRINCESS 600



PRINCESS 604



PRINCESS 705



PRINCESS 802

### INFORMAZIONI TECNICHE / TECHNICAL INFORMATION

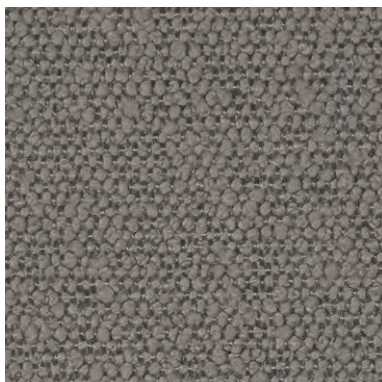
Composizione / composition	100% PLFR
Martindale / martindale	80.000 cicli/cycles
Pilling / Pilling	5

### MANUTENZIONE / MAINTENANCE



CAT. P

# Princess



PRINCESS 803



PRINCESS 903

## INFORMAZIONI TECNICHE / TECHNICAL INFORMATION

Composizione / composition	100% PLFR
Martindale / martindale	80.000 cicli/cycles
Pilling / Pilling	5

## MANUTENZIONE / MAINTENANCE





POTTER 501



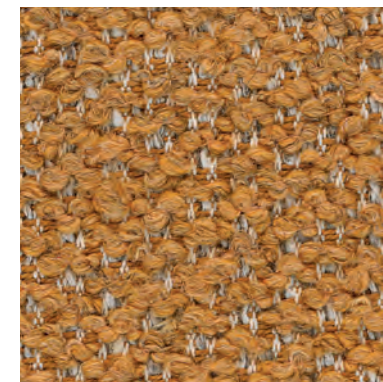
POTTER 503



POTTER 509



POTTER 510



POTTER 512



POTTER 522



POTTER 524



POTTER 529



POTTER 530



POTTER 539

### INFORMAZIONI TECNICHE / TECHNICAL INFORMATION

Composizione / composition	34% PC - 24% CO - 14% WO - 12% VI - 12% PL - 4% LI
Martindale / martindale	30.000 cicli/cycles
Pilling / Pilling	4

### MANUTENZIONE / MAINTENANCE





POTTER 540



POTTER 543

**INFORMAZIONI TECNICHE / TECHNICAL INFORMATION**

Composizione / composition	34% PC - 24% CO - 14% WO - 12% VI - 12% PL - 4% LI
Martindale / martindale	30.000 cicli/cycles
Pilling / Pilling	4

**MANUTENZIONE / MAINTENANCE**

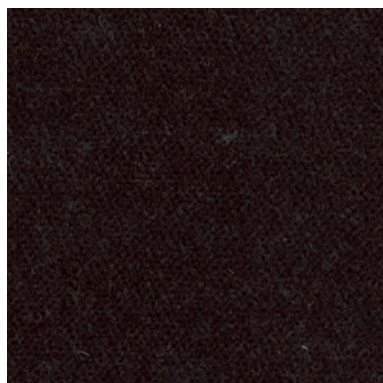


CAT. P

## Post



POST 055



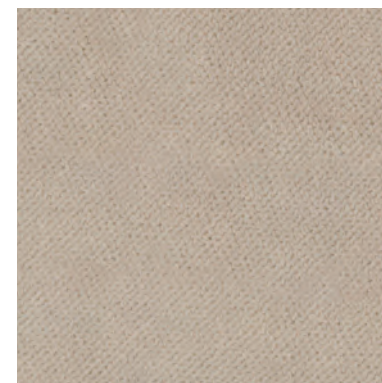
POST 058



POST 059



POST 061



POST 062



POST 071



POST 075



POST 076



POST 081



POST 086

### INFORMAZIONI TECNICHE / TECHNICAL INFORMATION

Composizione / composition	100% PL
Martindale / martindale	60.000 cicli/cycles
Pilling / Pilling	5

### MANUTENZIONE / MAINTENANCE



CAT. P

## Post



POST 089



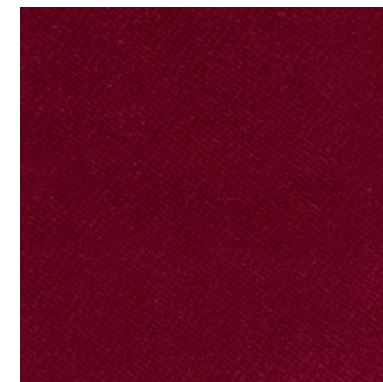
POST 093



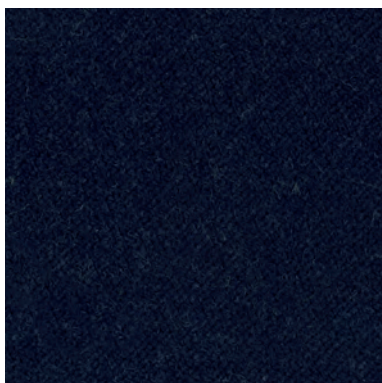
POST 094



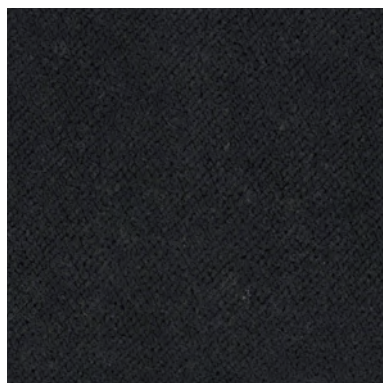
POST 096



POST 101



POST 203



POST 205



POST 208

### INFORMAZIONI TECNICHE / TECHNICAL INFORMATION

Composizione / composition	100% PL
Martindale / martindale	60.000 cicli/cycles
Pilling / Pilling	5

### MANUTENZIONE / MAINTENANCE



CAT. P

## Positano



POSITANO 105



POSITANO 108



POSITANO 114



POSITANO 134



POSITANO 139



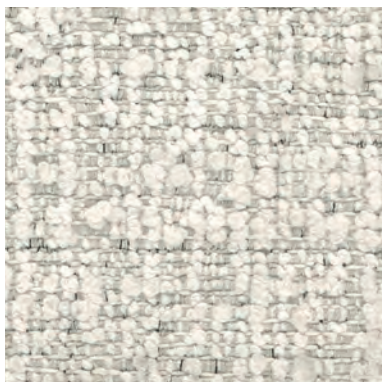
POSITANO 141

### INFORMAZIONI TECNICHE / TECHNICAL INFORMATION

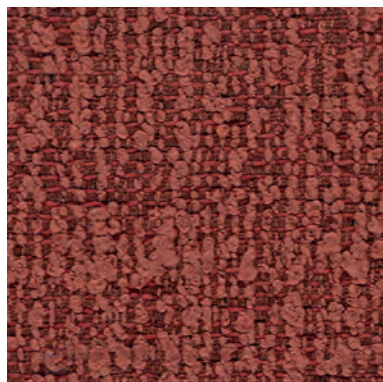
Composizione / composition	58% PVC - 14% PL 15% WO 13% CO
Martindale / martindale	20.000 cicli/cycles
Pilling / Pilling	5

### MANUTENZIONE / MAINTENANCE

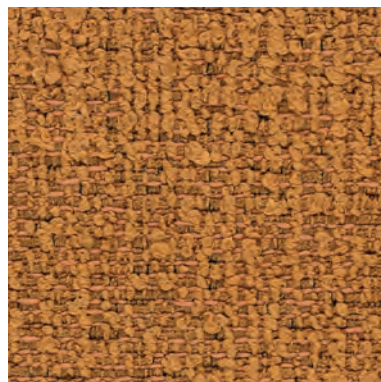




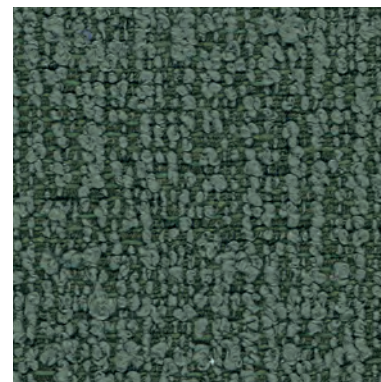
PORTO 101



PORTO 108



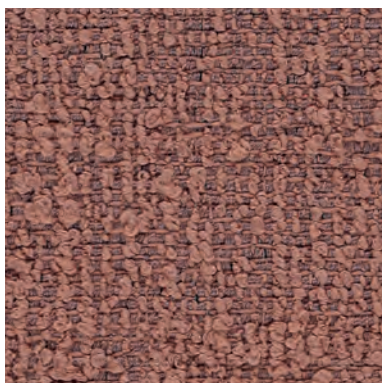
PORTO 109



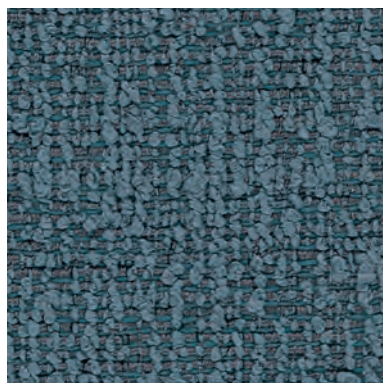
PORTO 110



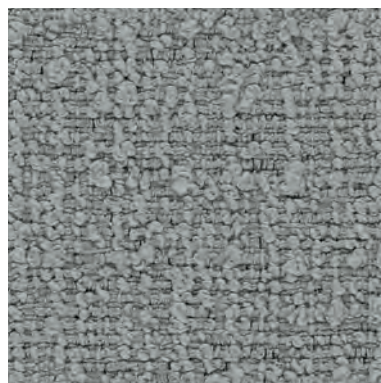
PORTO 113



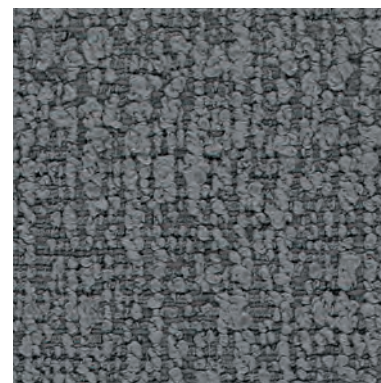
PORTO 117



PORTO 120



PORTO 123



PORTO 125



PORTO 127

### INFORMAZIONI TECNICHE / TECHNICAL INFORMATION

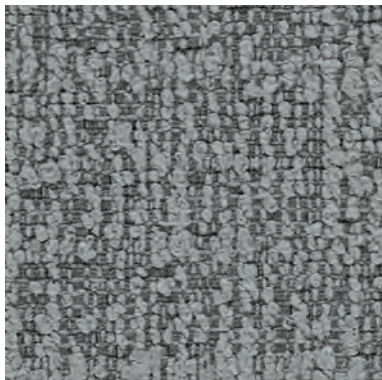
Composizione / composition	46% RPL - 37% PL - 17% RCO
Martindale / martindale	25.000 cicli/cycles
Pilling / Pilling	4



Eco-friendly

### MANUTENZIONE / MAINTENANCE





PORTO 202



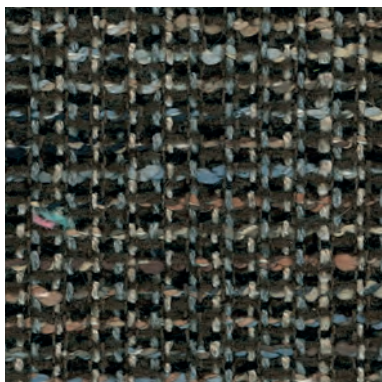
PORTO 204

**INFORMAZIONI TECNICHE / TECHNICAL INFORMATION**

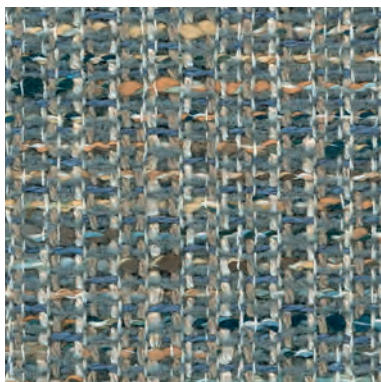
Composizione / composition	46% RPL - 37% PL - 17% RCO
Martindale / martindale	25.000 cicli/cycles
Pilling / Pilling	4

 Eco-friendly

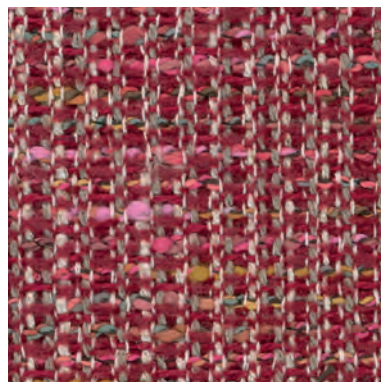
**MANUTENZIONE / MAINTENANCE**



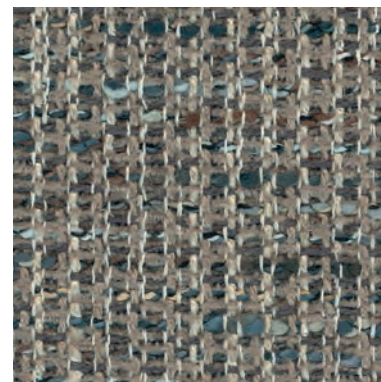
PLAY 001



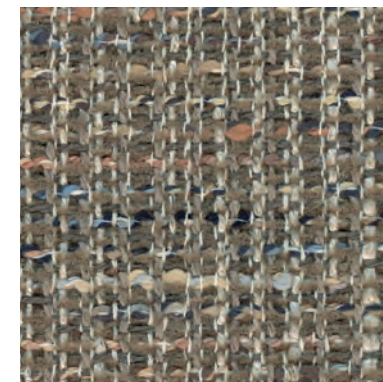
PLAY 002



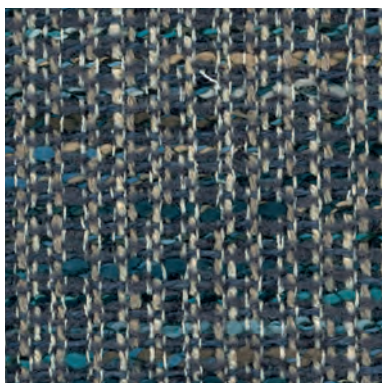
PLAY 004



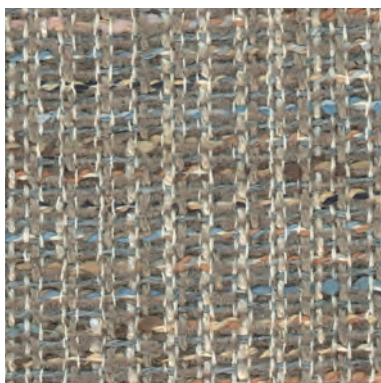
PLAY 007



PLAY 008



PLAY 013



PLAY 015



PLAY 018



PLAY 021

## INFORMAZIONI TECNICHE / TECHNICAL INFORMATION

Composizione / composition	55% CO - 16% PL - 13% VI - 12% PC - 3%LI - 1% PA
Martindale / martindale	20.000 cicli/cycles
Pilling / Pilling	4

## MANUTENZIONE / MAINTENANCE





PICTURE 501



PICTURE 502



PICTURE 503



PICTURE 505



PICTURE 506



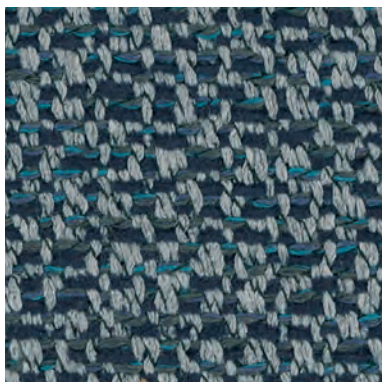
PICTURE 507

**INFORMAZIONI TECNICHE / TECHNICAL INFORMATION**

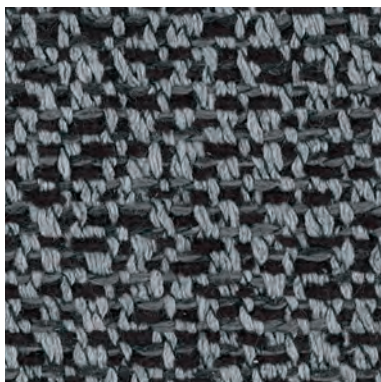
Composizione / composition	58% VI - 28% CO - 14% PL
Martindale / martindale	30.000 cicli/cycles
Pilling / Pilling	4

**MANUTENZIONE / MAINTENANCE**

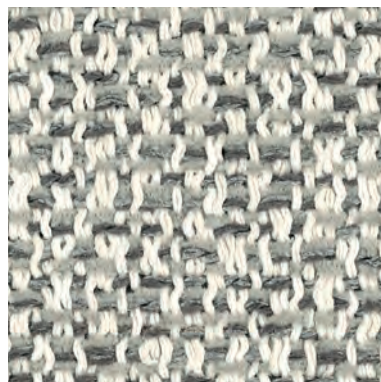




PHILIP 012



PHILIP 016



PHILIP 081



PHILIP 092



PHILIP 093



PHILIP 094

### INFORMAZIONI TECNICHE / TECHNICAL INFORMATION

Composizione / composition	54% RCO - 31% PL - 15% PC
Martindale / martindale	25.000 cicli/cycles
Pilling / Pilling	4

 Eco-friendly

### MANUTENZIONE / MAINTENANCE



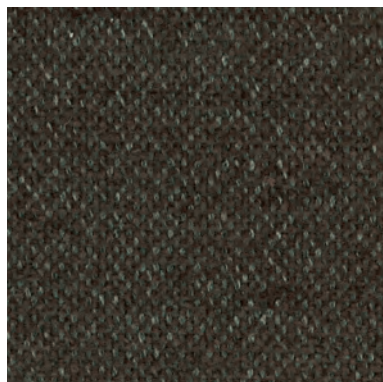


CAT. P

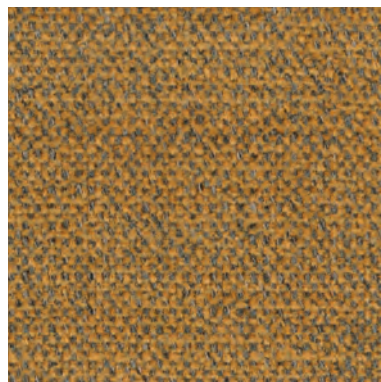
## Petra



PETRA 002



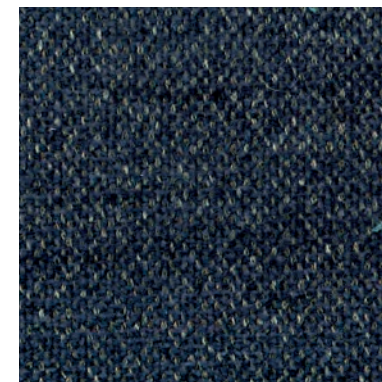
PETRA 010



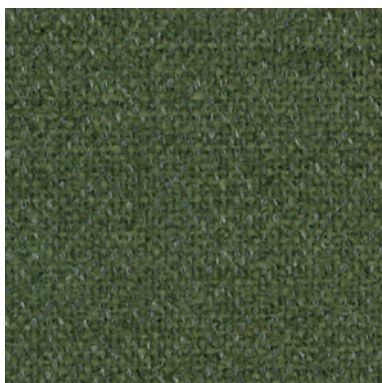
PETRA 014



PETRA 020



PETRA 022



PETRA 026



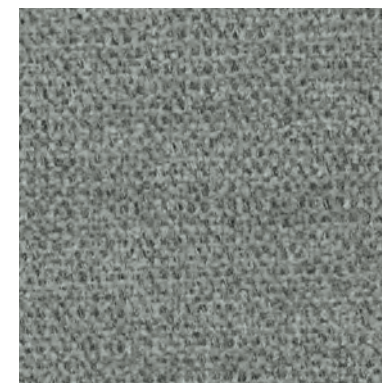
PETRA 029



PETRA 031



PETRA 036



PETRA 037

### INFORMAZIONI TECNICHE / TECHNICAL INFORMATION

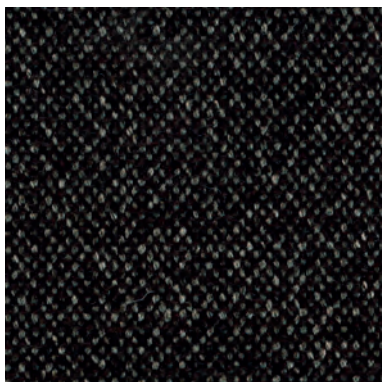
Composizione / composition	41% CO - 36% PL - 23% PC
Martindale / martindale	25.000 cicli/cycles
Pilling / Pilling	5

### MANUTENZIONE / MAINTENANCE



CAT. P

## Petra



PETRA 038



PETRA 040



PETRA 041



PETRA 042

### INFORMAZIONI TECNICHE / TECHNICAL INFORMATION

Composizione / composition	41% CO - 36% PL - 23% PC
Martindale / martindale	25.000 cicli/cycles
Pilling / Pilling	5

### MANUTENZIONE / MAINTENANCE



CAT. P

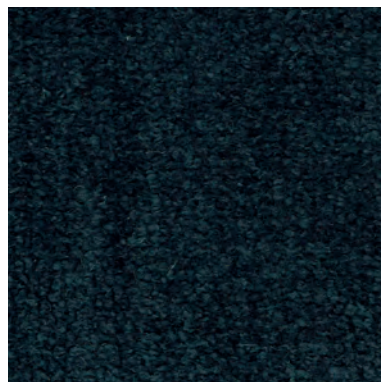
# Peggy



PEGGY 25



PEGGY 27



PEGGY 102



PEGGY 110



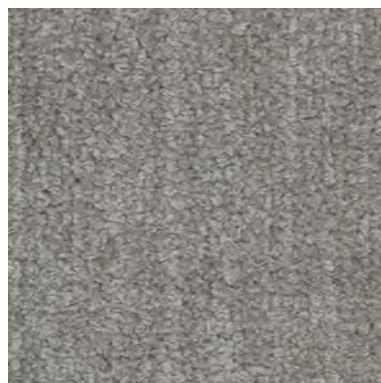
PEGGY 111



PEGGY 116



PEGGY 117



PEGGY 121



PEGGY 201



PEGGY 204

## INFORMAZIONI TECNICHE / TECHNICAL INFORMATION

Composizione / composition	80% PL - 20% CO
Martindale / martindale	100.000 cicli/cycles
Pilling / Pilling	4

## MANUTENZIONE / MAINTENANCE



CAT. P

# Peggy



PEGGY 207



PEGGY 209

## INFORMAZIONI TECNICHE / TECHNICAL INFORMATION

Composizione / composition	80% PL - 20% CO
Martindale / martindale	100.000 cicli/cycles
Pilling / Pilling	4

## MANUTENZIONE / MAINTENANCE

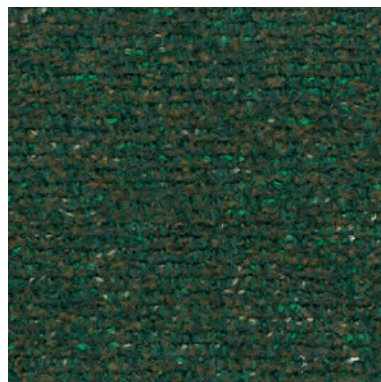




PECHINO 201



PECHINO 202



PECHINO 215



PECHINO 217



PECHINO 219



PECHINO 221



PECHINO 233



PECHINO 238



PECHINO 277



PECHINO 338

### INFORMAZIONI TECNICHE / TECHNICAL INFORMATION

Composizione / composition	60% RCO - 40% PL
Martindale / martindale	60.000 cicli/cycles
Pilling / Pilling	5



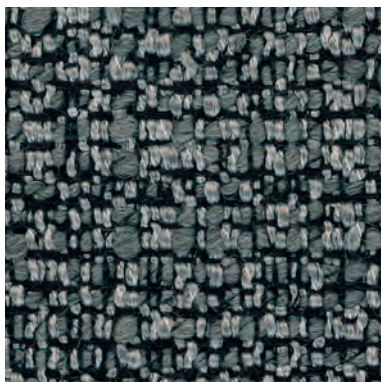
Eco-friendly

### MANUTENZIONE / MAINTENANCE





PABLO 09



PABLO 13



PABLO 49



PABLO 50



PABLO 75



PABLO 96



PABLO 154



PABLO 163



PABLO 168



PABLO 171

### INFORMAZIONI TECNICHE / TECHNICAL INFORMATION

Composizione / composition	23% WO - 48% PC - 12% PL - 7% CO - 10% NY
Martindale / martindale	24.000 cicli/cycles
Pilling / Pilling	4

### MANUTENZIONE / MAINTENANCE



CAT. M

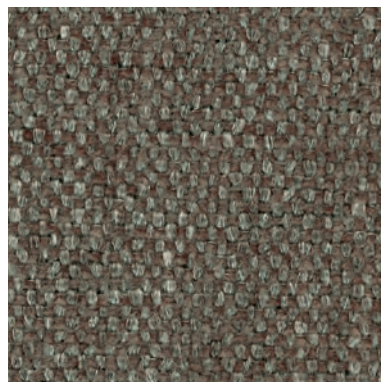
# Meghan



MEGHAN 04



MEGHAN 13



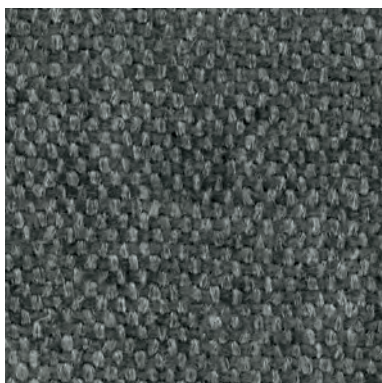
MEGHAN 19



MEGHAN 24



MEGHAN 56



MEGHAN 63

## INFORMAZIONI TECNICHE / TECHNICAL INFORMATION

Composizione / composition	66% PC - 11% LI - 12% PL - 11% VI
Martindale / martindale	30.000 cicli/cycles
Pilling / Pilling	4

## MANUTENZIONE / MAINTENANCE



CAT. M

# Medley



MEDLEY 002



MEDLEY 004



MEDLEY 007



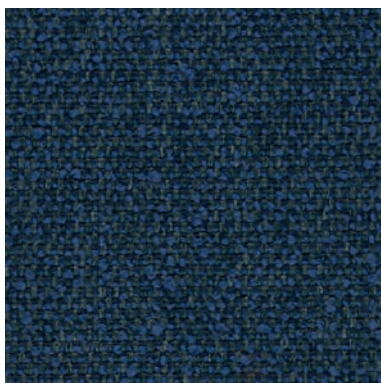
MEDLEY 009



MEDLEY 010



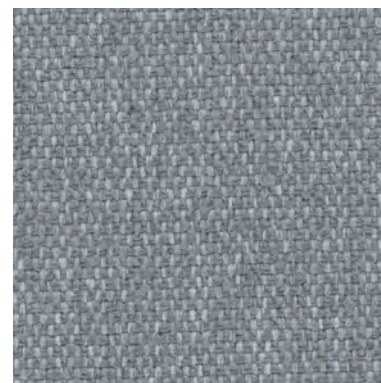
MEDLEY 011



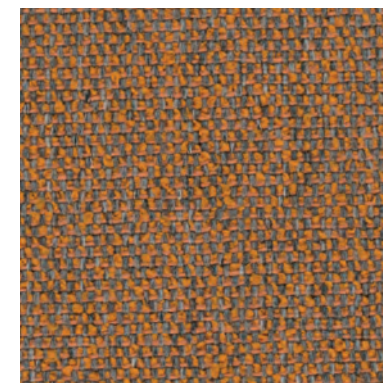
MEDLEY 016



MEDLEY 018



MEDLEY 020



MEDLEY 022

## INFORMAZIONI TECNICHE / TECHNICAL INFORMATION

Composizione / composition	85% PL - 15% CO
Martindale / martindale	30.000 cicli/cycles
Pilling / Pilling	5

## MANUTENZIONE / MAINTENANCE





CAT. M

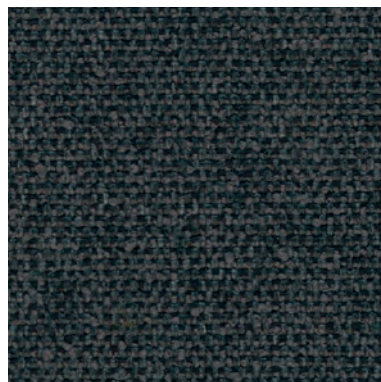
## Medley



MEDLEY 023



MEDLEY 027



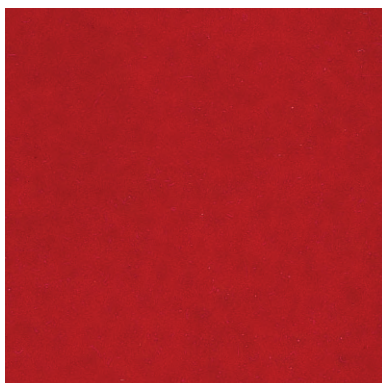
MEDLEY 028

### INFORMAZIONI TECNICHE / TECHNICAL INFORMATION

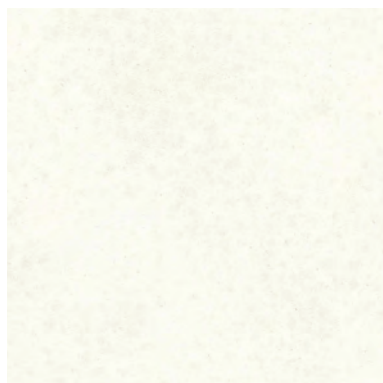
Composizione / composition	85% PL - 15% CO
Martindale / martindale	30.000 cicli/cycles
Pilling / Pilling	5

### MANUTENZIONE / MAINTENANCE

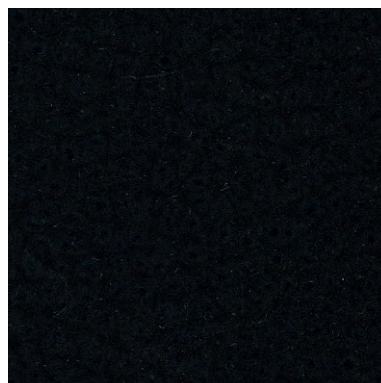




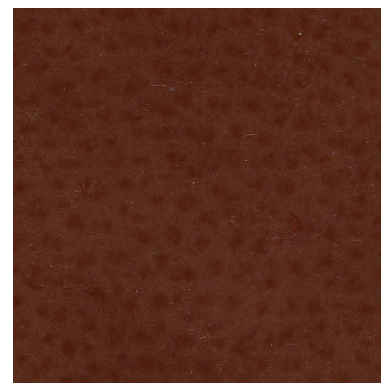
MAYA 000



MAYA 001



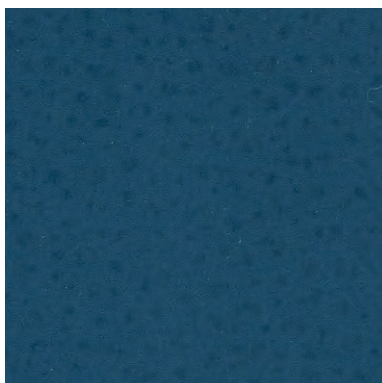
MAYA 016



MAYA 020



MAYA 100



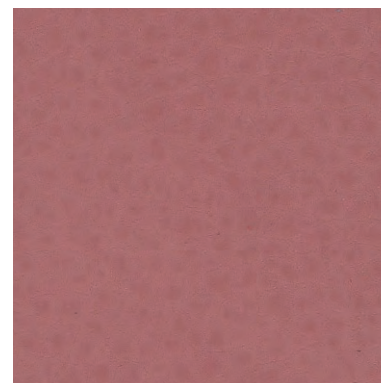
MAYA 120



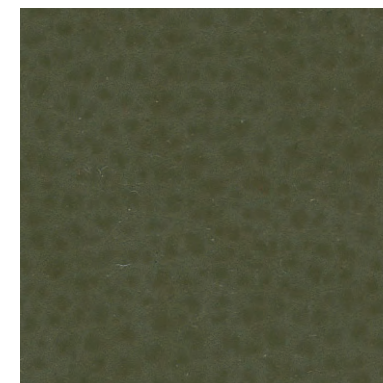
MAYA 175



MAYA 240



MAYA 275



MAYA 280

**INFORMAZIONI TECNICHE / TECHNICAL INFORMATION**

Composizione / composition	30% CO - 2% PU - 68% PVC
Martindale / martindale	>50.000 cicli/cycles
Pilling / Pilling	-

**MANUTENZIONE / MAINTENANCE**

SIMILPELLE CAT. M

## Maya



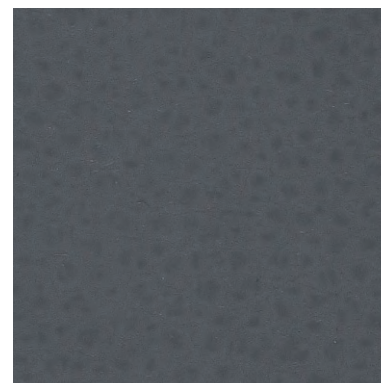
MAYA 410



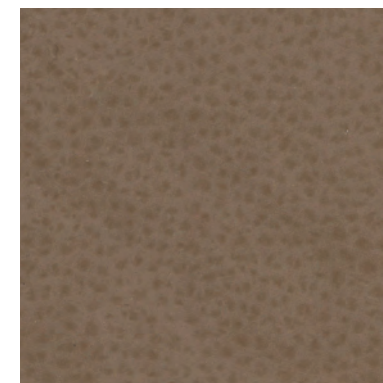
MAYA 450



MAYA 750



MAYA 791



MAYA 950

### INFORMAZIONI TECNICHE / TECHNICAL INFORMATION

Composizione / composition	30% CO - 2% PU - 68% PVC
Martindale / martindale	>50.000 cicli/cycles
Pilling / Pilling	-

### MANUTENZIONE / MAINTENANCE

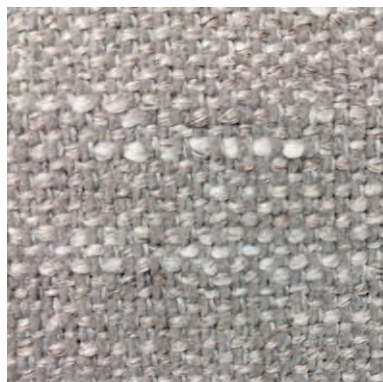


CAT. M

# Martin



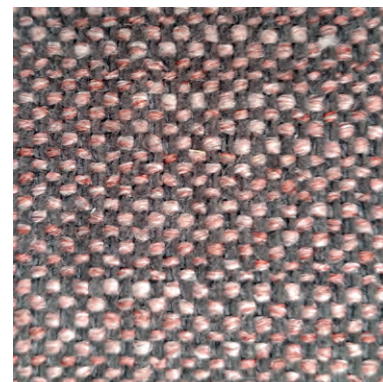
MARTIN 101



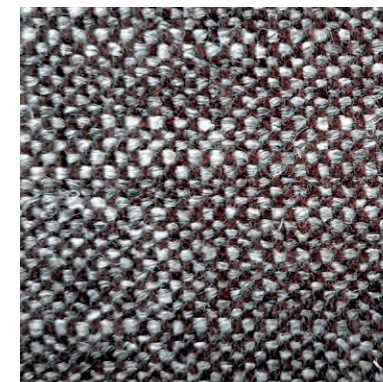
MARTIN 102



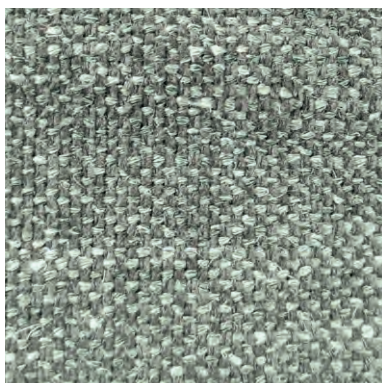
MARTIN 103



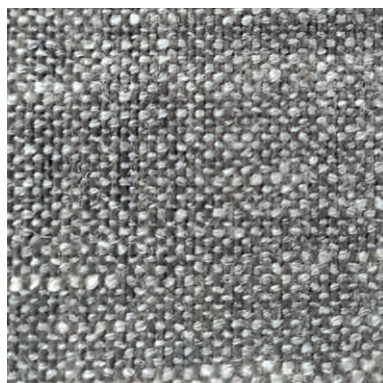
MARTIN 104



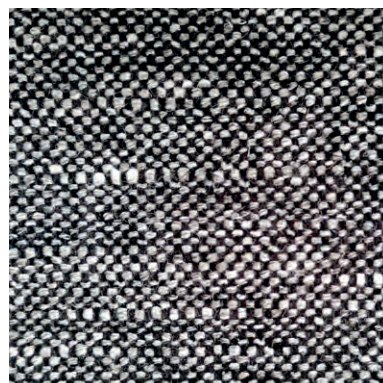
MARTIN 105



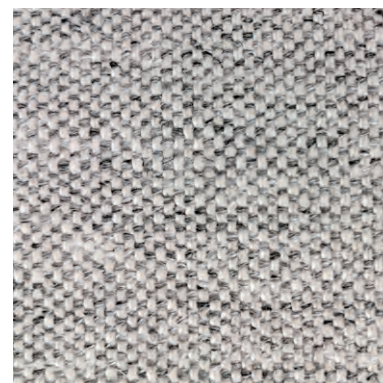
MARTIN 106



MARTIN 107



MARTIN 108



MARTIN 109

## INFORMAZIONI TECNICHE / TECHNICAL INFORMATION

Composizione / composition	28% PL - 23% LI - 14% WO - 13% CO - 9% VI - 7% PA - 5% PC
Martindale / martindale	50.000 cicli/cycles
Pilling / Pilling	4

## MANUTENZIONE / MAINTENANCE





MANHATTAN 001



MANHATTAN 002



MANHATTAN 009



MANHATTAN 012



MANHATTAN 017



MANHATTAN 019



MANHATTAN 020



MANHATTAN 021



MANHATTAN 102



MANHATTAN 103

### INFORMAZIONI TECNICHE / TECHNICAL INFORMATION

Composizione / composition	50% PL - 27% PC - 9% CO - 7% LI - 7% VI
Martindale / martindale	25.000 cicli/cycles
Pilling / Pilling	5

### MANUTENZIONE / MAINTENANCE





MANHATTAN 104



MANHATTAN 105

**INFORMAZIONI TECNICHE / TECHNICAL INFORMATION**

Composizione / composition	50% PL - 27% PC - 9% CO - 7% LI - 7% VI
Martindale / martindale	25.000 cicli/cycles
Pilling / Pilling	5

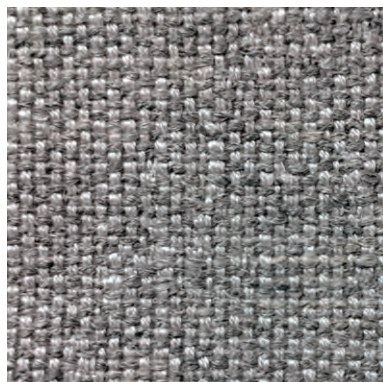
**MANUTENZIONE / MAINTENANCE**

CAT. M

## Madera



MADERA 350



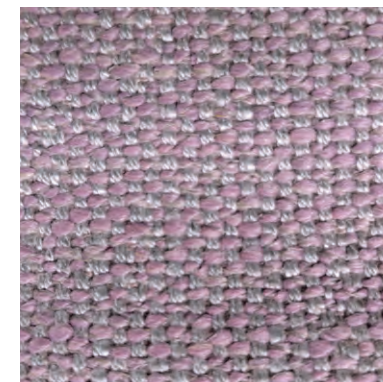
MADERA 360



MADERA 361



MADERA 362



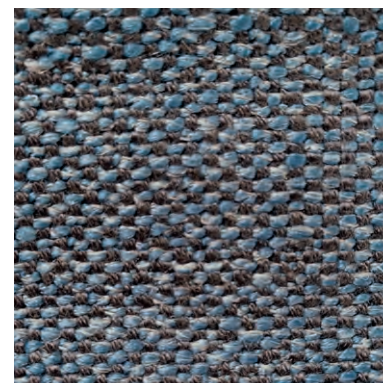
MADERA 364



MADERA 551



MADERA 571



MADERA 572



MADERA 573



MADERA 575

### INFORMAZIONI TECNICHE / TECHNICAL INFORMATION

Composizione / composition	28% CO - 26%VI - 25% PC - 16% LI - 5% PL
Martindale / martindale	25.000 cicli/cycles
Pilling / Pilling	4

### MANUTENZIONE / MAINTENANCE

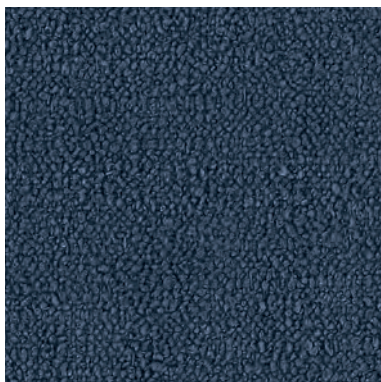


CAT. L

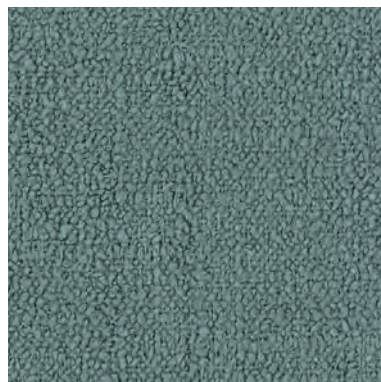
# Lounge



LOUNGE 310



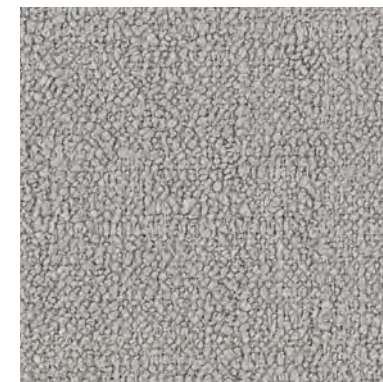
LOUNGE 315



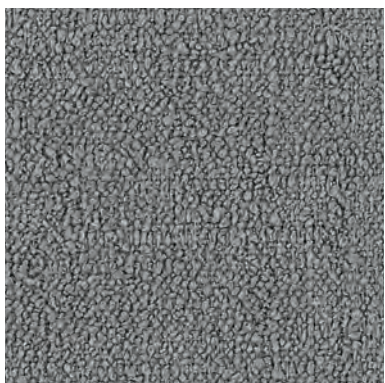
LOUNGE 319



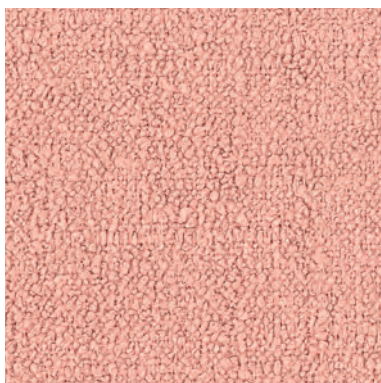
LOUNGE 325



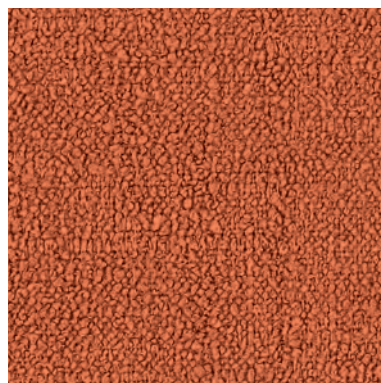
LOUNGE 331



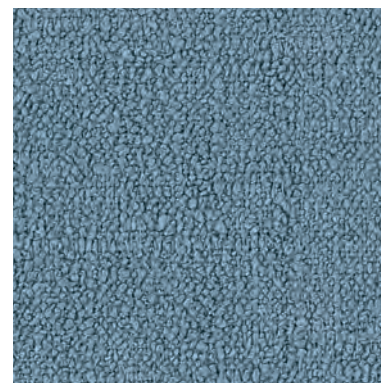
LOUNGE 332



LOUNGE 335



LOUNGE 348



LOUNGE 353



LOUNGE 357

## INFORMAZIONI TECNICHE / TECHNICAL INFORMATION

Composizione / composition	100% PL
Martindale / martindale	30.000 cicli/cycles
Pilling / Pilling	4

## MANUTENZIONE / MAINTENANCE



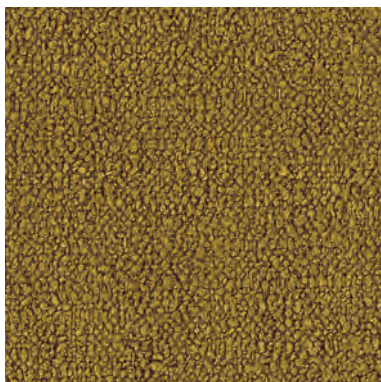


CAT. L

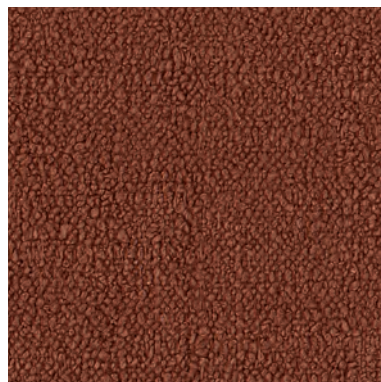
## Lounge



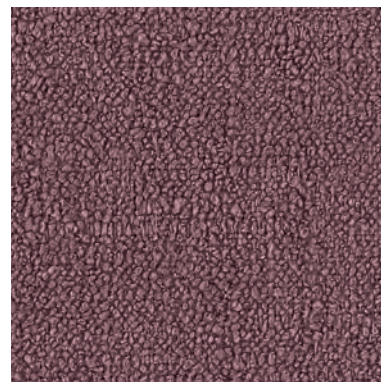
LOUNGE 376



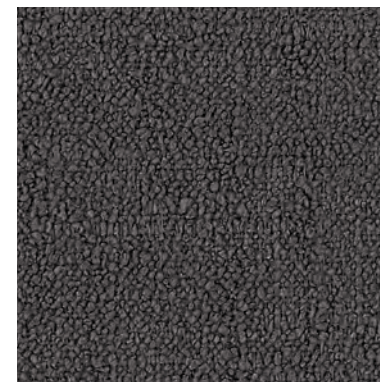
LOUNGE 381



LOUNGE 388



LOUNGE 392



LOUNGE 394

### INFORMAZIONI TECNICHE / TECHNICAL INFORMATION

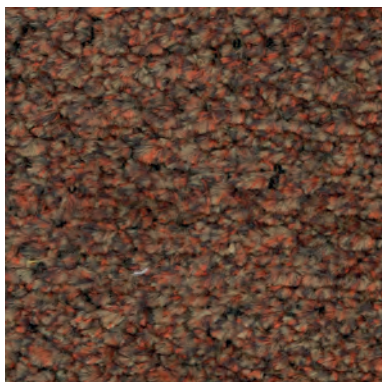
Composizione / composition	100% PL
Martindale / martindale	30.000 cicli/cycles
Pilling / Pilling	4

### MANUTENZIONE / MAINTENANCE



CAT. L

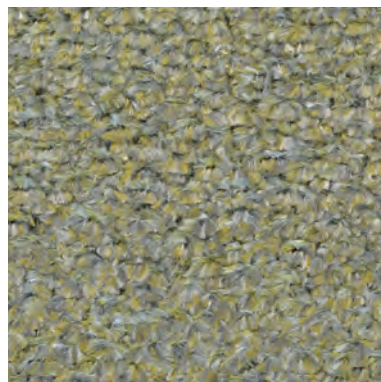
# Lolita



LOLITA 105



LOLITA 125



LOLITA 129



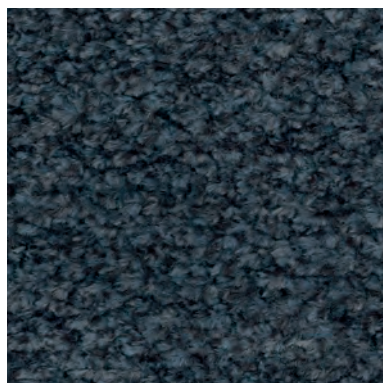
LOLITA 131



LOLITA 133



LOLITA 134



LOLITA 153



LOLITA 159

## INFORMAZIONI TECNICHE / TECHNICAL INFORMATION

Composizione / composition	100% PL
Martindale / martindale	40.000 cicli/cycles
Pilling / Pilling	4

## MANUTENZIONE / MAINTENANCE



CAT. L

# Logan



LOGAN 001



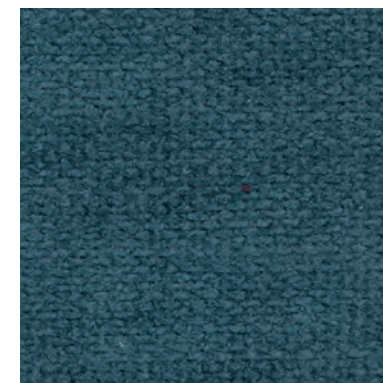
LOGAN 002



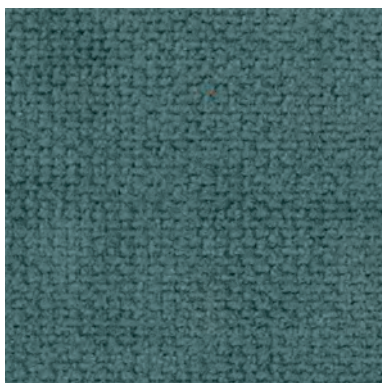
LOGAN 004



LOGAN 006



LOGAN 011



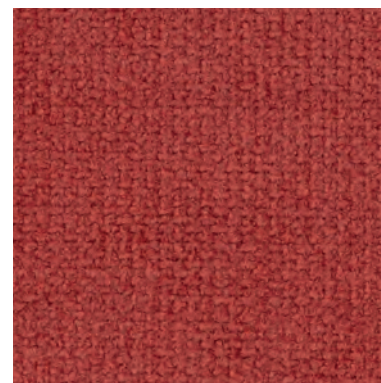
LOGAN 012



LOGAN 014



LOGAN 015



LOGAN 019



LOGAN 020

## INFORMAZIONI TECNICHE / TECHNICAL INFORMATION

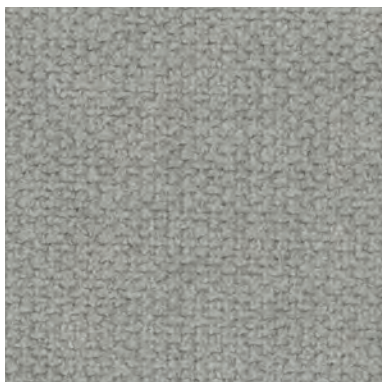
Composizione / composition	100% PL
Martindale / martindale	100.000 cicli/cycles
Pilling / Pilling	5

## MANUTENZIONE / MAINTENANCE

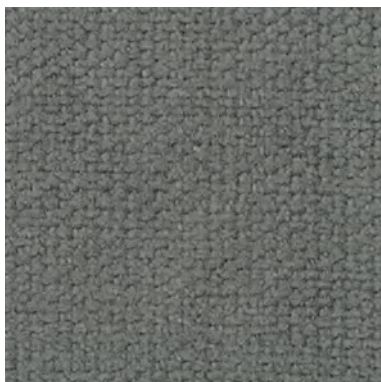


CAT. L

# Logan



LOGAN 021



LOGAN 022



LOGAN 025



LOGAN 026

## INFORMAZIONI TECNICHE / TECHNICAL INFORMATION

Composizione / composition	100% PL
Martindale / martindale	100.000 cicli/cycles
Pilling / Pilling	5

## MANUTENZIONE / MAINTENANCE



CAT. L

# Link



LINK 001



LINK 002



LINK 003



LINK 004



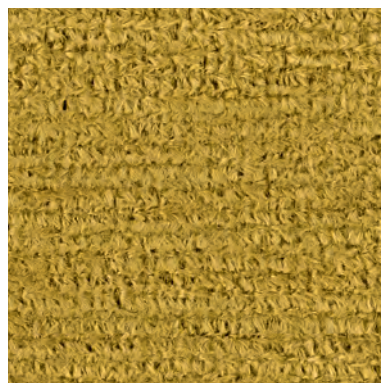
LINK 005



LINK 007



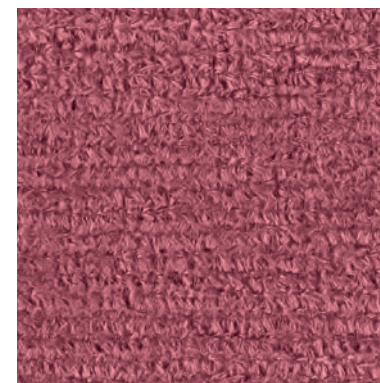
LINK 008



LINK 010



LINK 015



LINK 016

## INFORMAZIONI TECNICHE / TECHNICAL INFORMATION

Composizione / composition	97% PL - 3% VI
Martindale / martindale	30.000 cicli/cycles
Pilling / Pilling	4

## MANUTENZIONE / MAINTENANCE

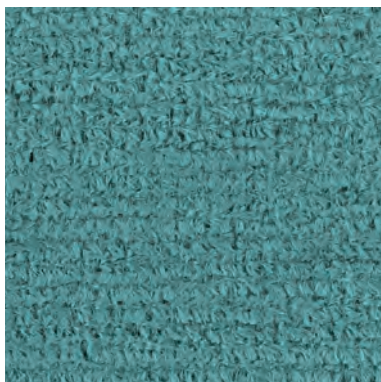


CAT. L

# Link



LINK 020



LINK 022



LINK 025



LINK 028



LINK 033

## INFORMAZIONI TECNICHE / TECHNICAL INFORMATION

Composizione / composition	97% PL - 3% VI
Martindale / martindale	30.000 cicli/cycles
Pilling / Pilling	4

## MANUTENZIONE / MAINTENANCE



CAT. L

# Like



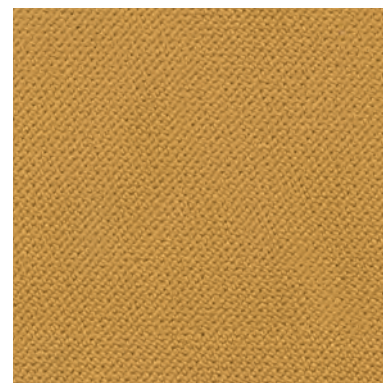
LIKE 002



LIKE 111



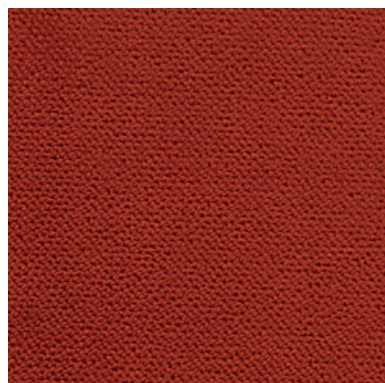
LIKE 200



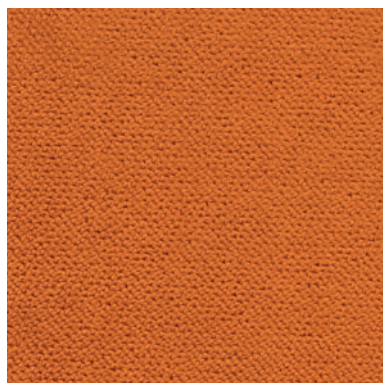
LIKE 301



LIKE 303



LIKE 304



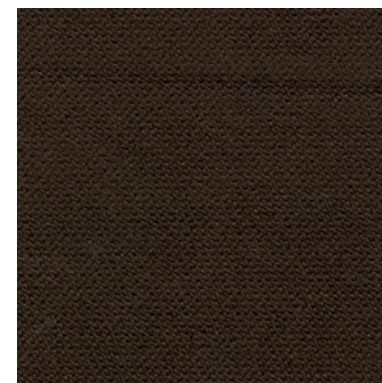
LIKE 307



LIKE 402




LIKE 404



LIKE 405

## INFORMAZIONI TECNICHE / TECHNICAL INFORMATION

Composizione / composition	100% PL
Martindale / martindale	100.000 cicli/cycles
Pilling / Pilling	4

 **anallergico**  
hypoallergenic

 **irrestringibile**  
non-shrink

 **antimacchia**  
stain resistant

## MANUTENZIONE / MAINTENANCE



CAT. L

# Like



LIKE 408



LIKE 600



LIKE 601



LIKE 602



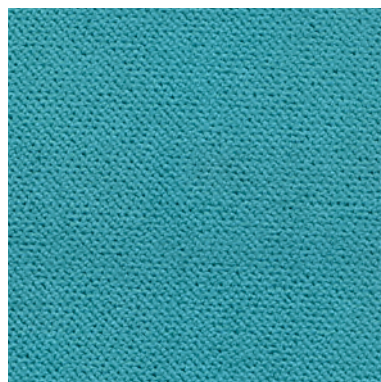
LIKE 603



LIKE 604



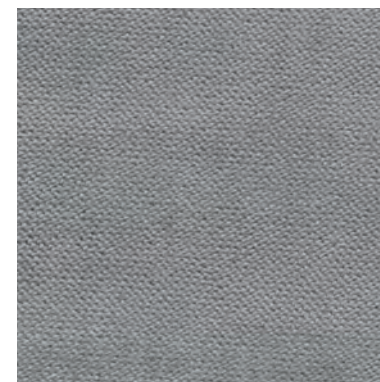
LIKE 605



LIKE 700




LIKE 702



LIKE 704

## INFORMAZIONI TECNICHE / TECHNICAL INFORMATION

Composizione / composition	100% PL
Martindale / martindale	100.000 cicli/cycles
Pilling / Pilling	4

 **anallergico**  
hypoallergenic

 **irrestringibile**  
non-shrink

 **antimacchia**  
stain resistant

## MANUTENZIONE / MAINTENANCE





CAT. L

Like



LIKE 705




LIKE 801





LIKE 804

**INFORMAZIONI TECNICHE / TECHNICAL INFORMATION**

Composizione / composition	100% PL
Martindale / martindale	100.000 cicli/cycles
Pilling / Pilling	4

 **anallergico**  
hypoallergenic

 **irrestringibile**  
non-shrink

 **antimacchia**  
stain resistant

**MANUTENZIONE / MAINTENANCE**



CAT. L

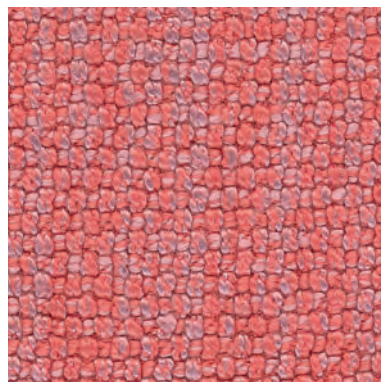
# Lewis



LEWIS 102



LEWIS 201



LEWIS 315



LEWIS 400



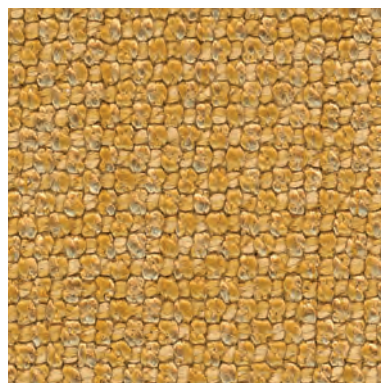
LEWIS 403



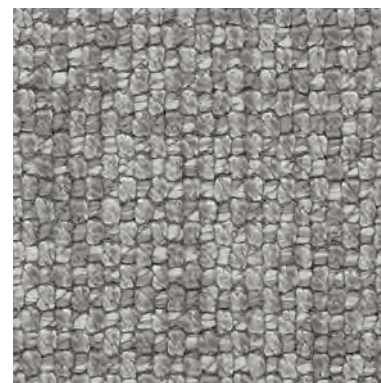
LEWIS 405



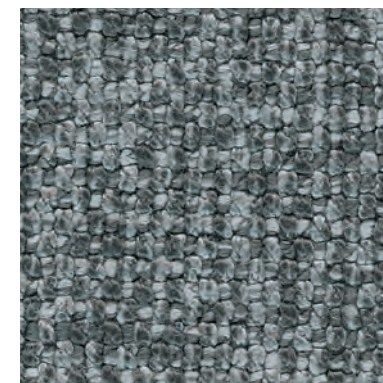
LEWIS 411



LEWIS 503



LEWIS 600



LEWIS 601

## INFORMAZIONI TECNICHE / TECHNICAL INFORMATION

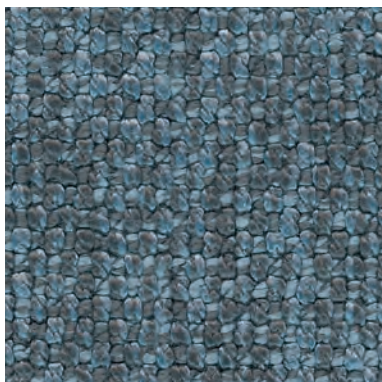
Composizione / composition	57% PL - 43% VI
Martindale / martindale	100.000 cicli/cycles
Pilling / Pilling	4

## MANUTENZIONE / MAINTENANCE

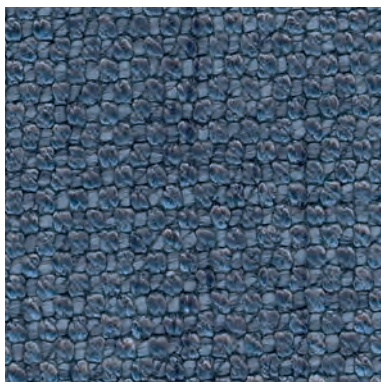


CAT. L

## Lewis



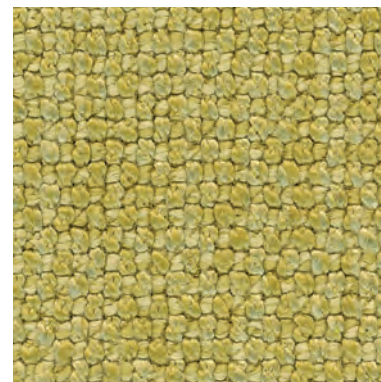
LEWIS 705



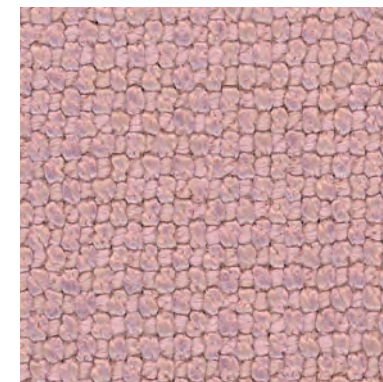
LEWIS 714



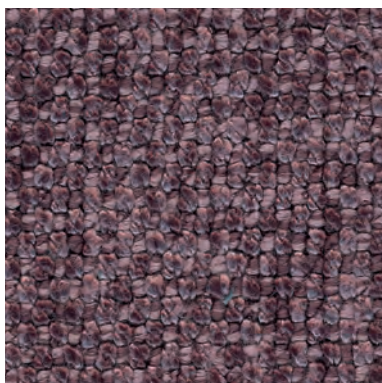
LEWIS 800



LEWIS 802



LEWIS 900



LEWIS 905

### INFORMAZIONI TECNICHE / TECHNICAL INFORMATION

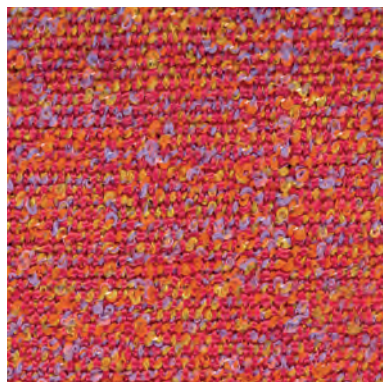
Composizione / composition	57% PL - 43% VI
Martindale / martindale	100.000 cicli/cycles
Pilling / Pilling	4

### MANUTENZIONE / MAINTENANCE

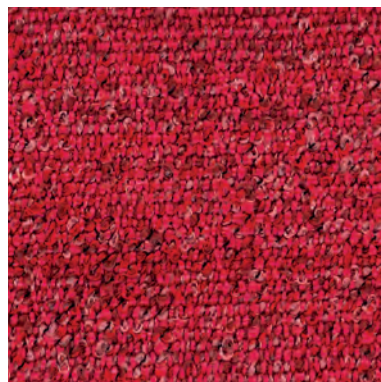




EVERGREEN 101



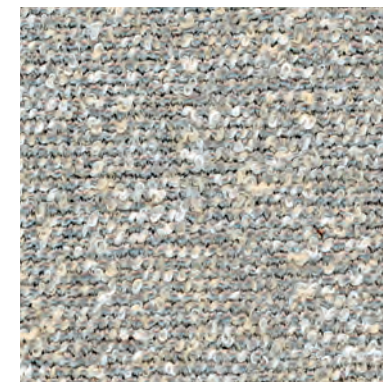
EVERGREEN 304



EVERGREEN 305



EVERGREEN 400



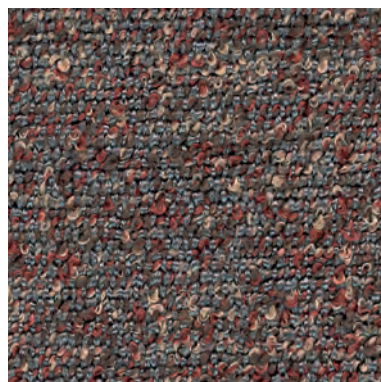
EVERGREEN 600



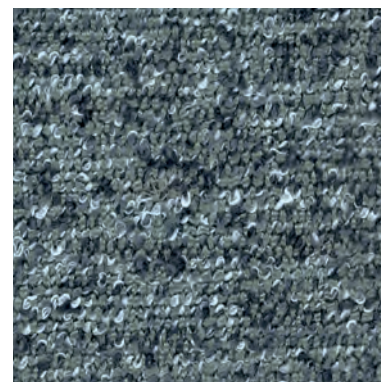
EVERGREEN 603



EVERGREEN 605



EVERGREEN 611



EVERGREEN 701



EVERGREEN 802

## INFORMAZIONI TECNICHE / TECHNICAL INFORMATION

Composizione / composition	100% PP
Martindale / martindale	50.000 cicli/cycles
Pilling / Pilling	4

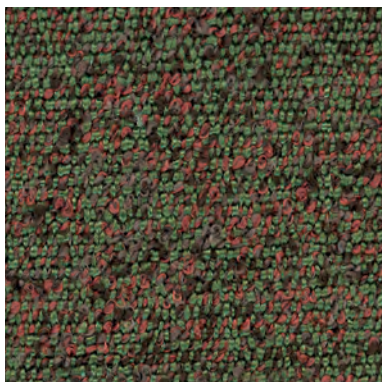


Eco-friendly

anallergico  
hypoallergenicirrestringibile  
non-shrinkidrorepellente  
water repellent

## MANUTENZIONE / MAINTENANCE





EVERGREEN 806




EVERGREEN 900


## INFORMAZIONI TECNICHE / TECHNICAL INFORMATION

Composizione / composition	100% PP
Martindale / martindale	50.000 cicli/cycles
Pilling / Pilling	4

 **Eco-friendly**

 **anallergico**  
hypoallergenic

 **irrestringibile**  
non-shrink

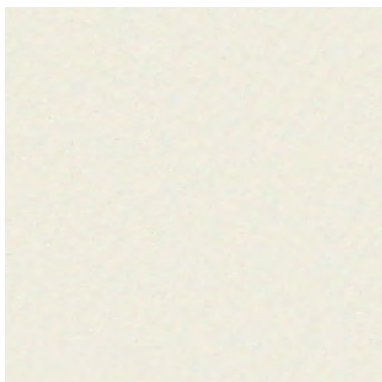
 **idrorepellente**  
water repellent

## MANUTENZIONE / MAINTENANCE



SIMILPELLE CAT. E

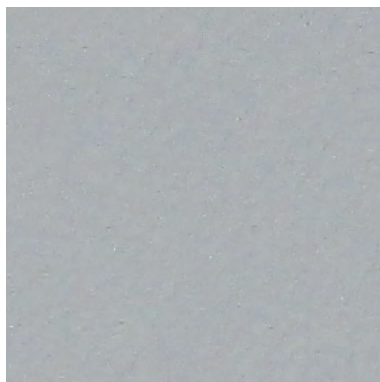
## Everest



EVEREST 002



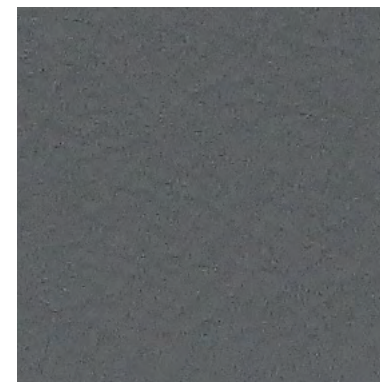
EVEREST 004



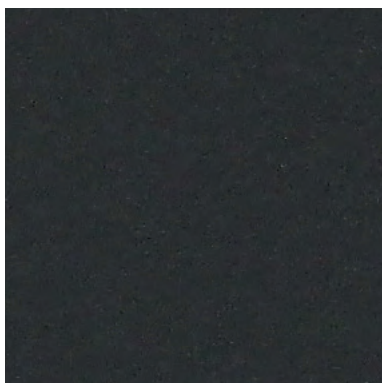
EVEREST 005



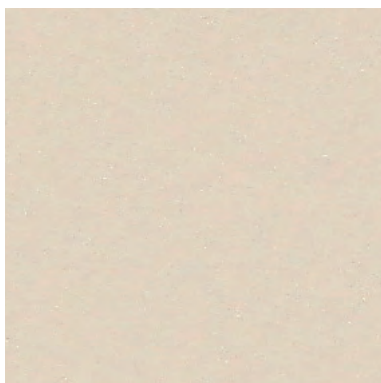
EVEREST 006



EVEREST 007



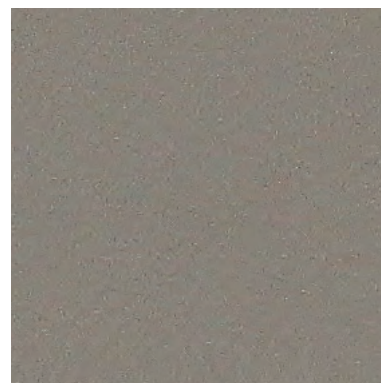
EVEREST 008



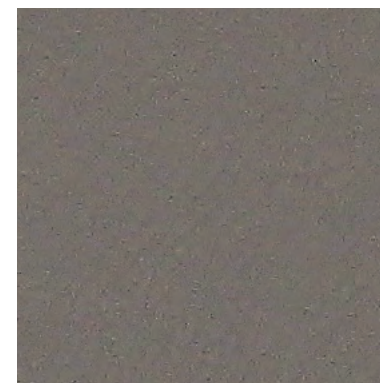
EVEREST 009



EVEREST 011



EVEREST 014



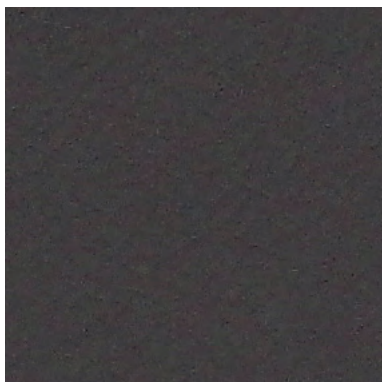
EVEREST 015

### INFORMAZIONI TECNICHE / TECHNICAL INFORMATION

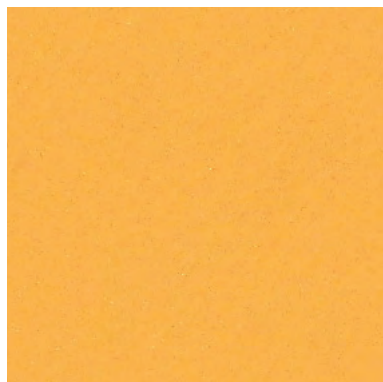
Composizione / composition	85% PVC - 15% PU
Martindale / martindale	50.000 cicli/cycles
Pilling / Pilling	-

### MANUTENZIONE / MAINTENANCE





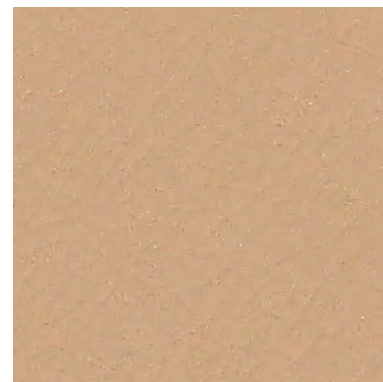
EVEREST 016



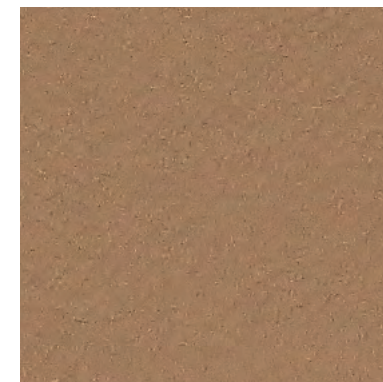
EVEREST 017



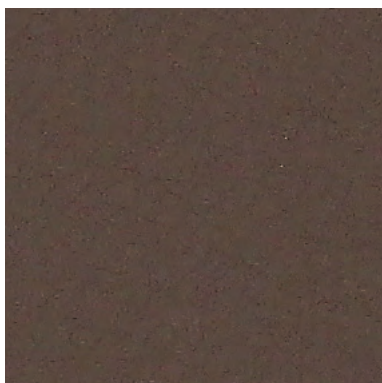
EVEREST 026



EVEREST 029



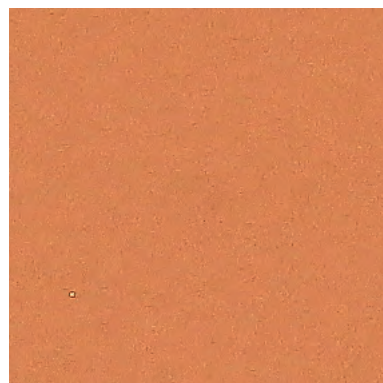
EVEREST 030



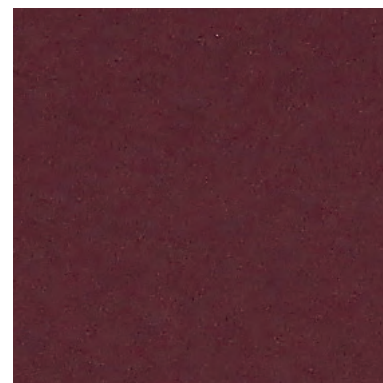
EVEREST 031



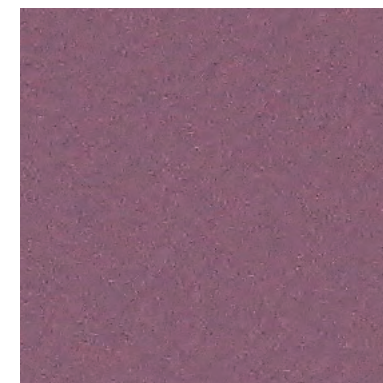
EVEREST 035



EVEREST 037



EVEREST 040



EVEREST 043

**INFORMAZIONI TECNICHE / TECHNICAL INFORMATION**

Composizione / composition	85% PVC - 15% PU
Martindale / martindale	50.000 cicli/cycles
Pilling / Pilling	-

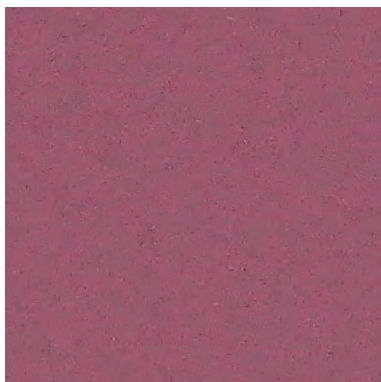
**MANUTENZIONE / MAINTENANCE**

SIMILPELLE CAT. E

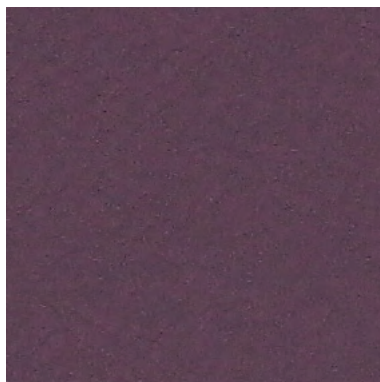
## Everest



EVEREST 045



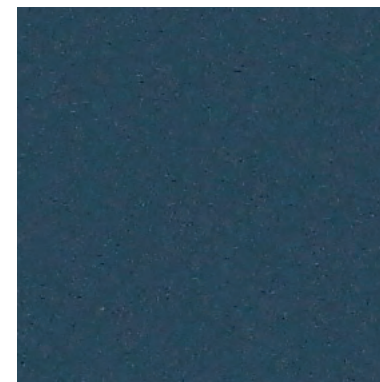
EVEREST 046



EVEREST 048



EVEREST 051



EVEREST 055

### INFORMAZIONI TECNICHE / TECHNICAL INFORMATION

Composizione / composition	85% PVC - 15% PU
Martindale / martindale	50.000 cicli/cycles
Pilling / Pilling	-

### MANUTENZIONE / MAINTENANCE





CAT. E

## Even



EVEN 003



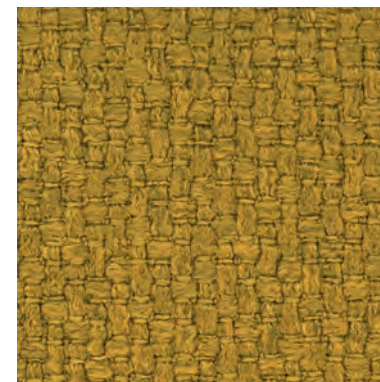
EVEN 111



EVEN 300



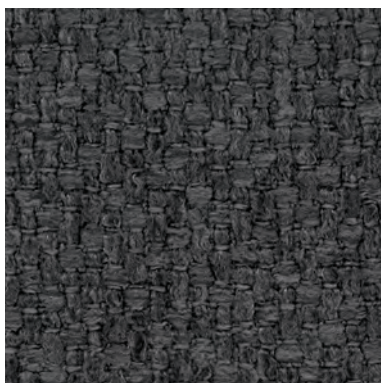
EVEN 408



EVEN 503



EVEN 600



EVEN 604



EVEN 608



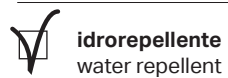
EVEN 609



EVEN 610

### INFORMAZIONI TECNICHE / TECHNICAL INFORMATION

Composizione / composition	100% PL
Martindale / martindale	50.000 cicli/cycles
Pilling / Pilling	4



idrorepellente  
water repellent

### MANUTENZIONE / MAINTENANCE

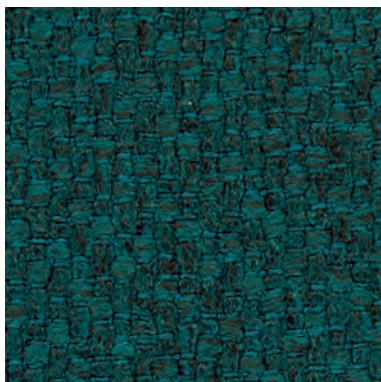


CAT. E

## Even



EVEN 705



EVEN 708




EVEN 801



EVEN 901

### INFORMAZIONI TECNICHE / TECHNICAL INFORMATION

Composizione / composition	100% PL
Martindale / martindale	50.000 cicli/cycles
Pilling / Pilling	4

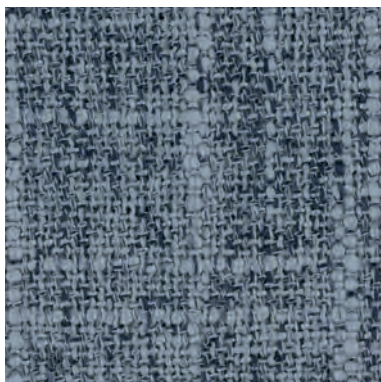
 **idrorepellente**  
water repellent

### MANUTENZIONE / MAINTENANCE





ERIK 007



ERIK 015



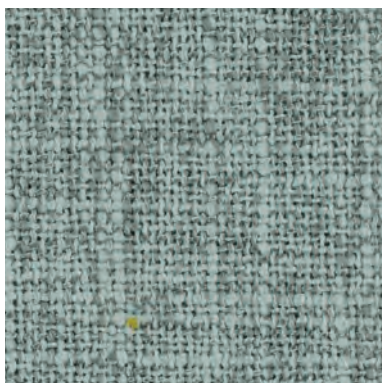
ERIK 018



ERIK 019



ERIK 020



ERIK 021



ERIK 023



ERIK 027



ERIK 130



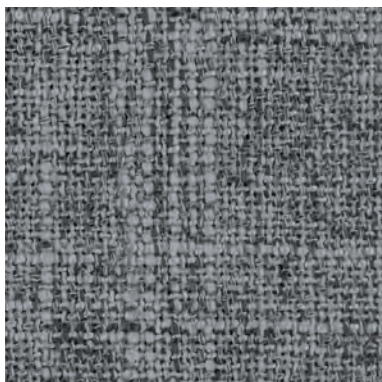
ERIK 001

### INFORMAZIONI TECNICHE / TECHNICAL INFORMATION

Composizione / composition	100% PL
Martindale / martindale	30.000 cicli/cycles
Pilling / Pilling	4

### MANUTENZIONE / MAINTENANCE





ERIK 205



ERIK 616

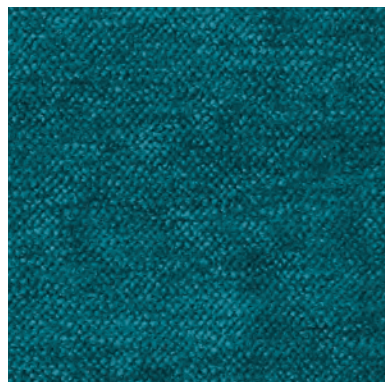
**INFORMAZIONI TECNICHE / TECHNICAL INFORMATION**

Composizione / composition	100% PL
Martindale / martindale	30.000 cicli/cycles
Pilling / Pilling	4

**MANUTENZIONE / MAINTENANCE**

CAT. E

# Enter



ENTER 006



ENTER 009



ENTER 013



ENTER 020



ENTER 024



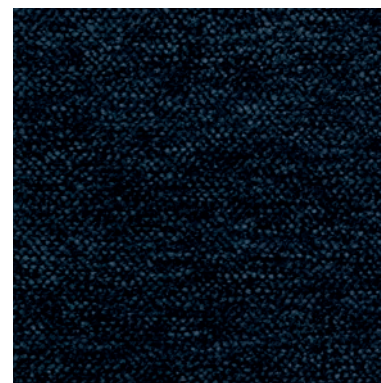
ENTER 025



ENTER 030



ENTER 037



ENTER 041



ENTER 044

## INFORMAZIONI TECNICHE / TECHNICAL INFORMATION

Composizione / composition	100% PL
Martindale / martindale	40.000 cicli/cycles
Pilling / Pilling	4

## MANUTENZIONE / MAINTENANCE



CAT. E

## Enter



ENTER 057



ENTER 059



ENTER 062



ENTER 074



ENTER 100



ENTER 101

### INFORMAZIONI TECNICHE / TECHNICAL INFORMATION

Composizione / composition	100% PL
Martindale / martindale	40.000 cicli/cycles
Pilling / Pilling	4

### MANUTENZIONE / MAINTENANCE



CAT. E

# Emery



EMERY 07



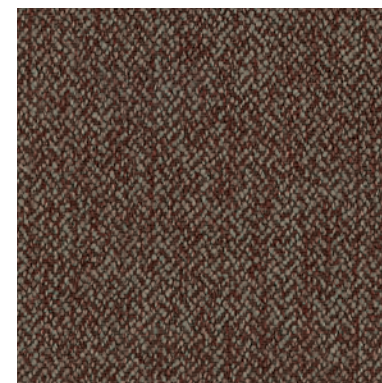
EMERY 21



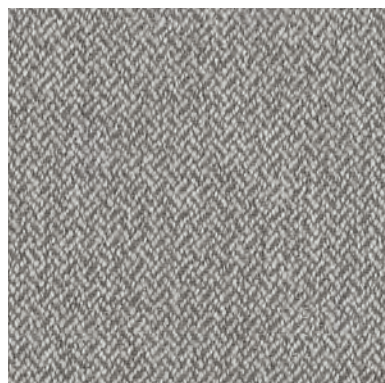
EMERY 24



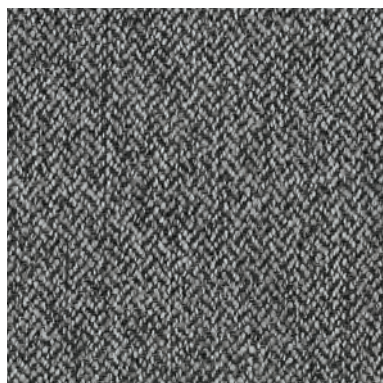
EMERY 25



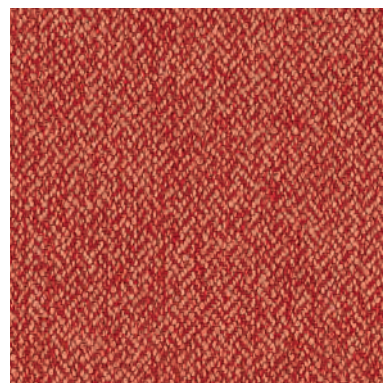
EMERY 30



EMERY 31



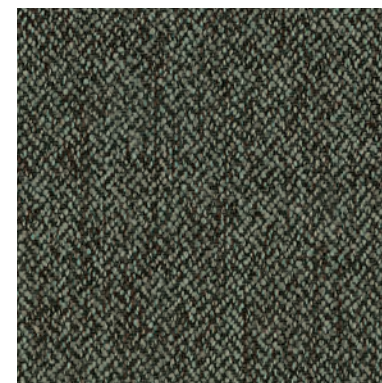
EMERY 37



EMERY 44




EMERY 53



EMERY 62

## INFORMAZIONI TECNICHE / TECHNICAL INFORMATION

Composizione / composition	100% PL
Martindale / martindale	40.000 cicli/cycles
Pilling / Pilling	4

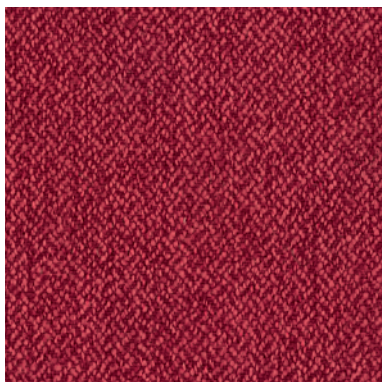
 **idrorepellente**  
water repellent

## MANUTENZIONE / MAINTENANCE



CAT. E

# Emery




EMERY 70



EMERY 74

## INFORMAZIONI TECNICHE / TECHNICAL INFORMATION

Composizione / composition	100% PL
Martindale / martindale	40.000 cicli/cycles
Pilling / Pilling	4

 **idrorepellente**  
water repellent

## MANUTENZIONE / MAINTENANCE





CAT. E

## Easy care



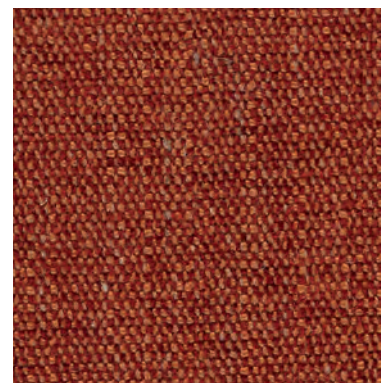
EASY CARE 001



EASY CARE 002



EASY CARE 003



EASY CARE 006



EASY CARE 007



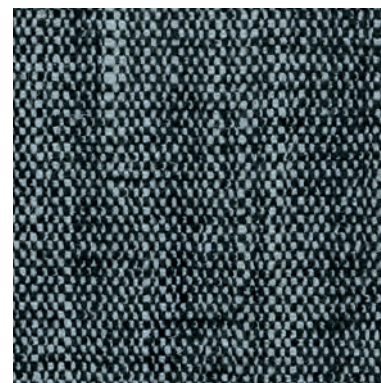
EASY CARE 008



EASY CARE 010



EASY CARE 012




EASY CARE 013



EASY CARE 015

### INFORMAZIONI TECNICHE / TECHNICAL INFORMATION

Composizione / composition	70% PL - 30% LI
Martindale / martindale	50.000 cicli/cycles
Pilling / Pilling	5

 **idrorepellente**  
water repellent

 **irrestringibile**  
non-shrink

 **antimacchia**  
stain resistant

### MANUTENZIONE / MAINTENANCE

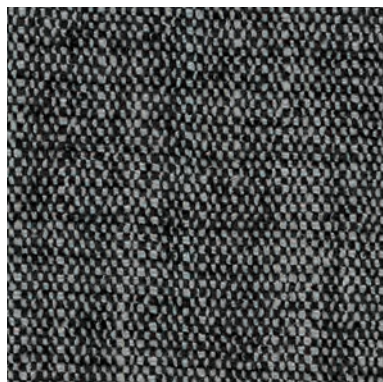


CAT. E

## Easy care




EASY CARE 016





EASY CARE 017

### INFORMAZIONI TECNICHE / TECHNICAL INFORMATION

Composizione / composition	70% PL - 30% LI
Martindale / martindale	50.000 cicli/cycles
Pilling / Pilling	5

 **idrorepellente**  
water repellent

 **irrestringibile**  
non-shrink

 **antimacchia**  
stain resistant

### MANUTENZIONE / MAINTENANCE



CAT. A

After



AFTER 011



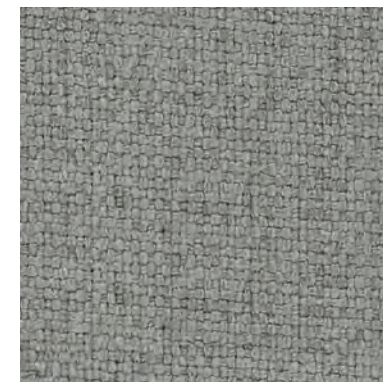
AFTER 033



AFTER 043



AFTER 045



AFTER 060



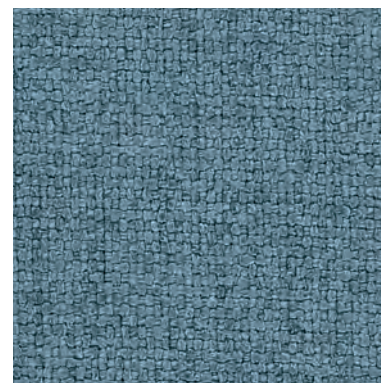
AFTER 061



AFTER 063



AFTER 064




AFTER 076



AFTER 084

**INFORMAZIONI TECNICHE / TECHNICAL INFORMATION**

Composizione / composition	100% PL
Martindale / martindale	60.000 cicli/cycles
Pilling / Pilling	5

 **idrorepellente**  
water repellent

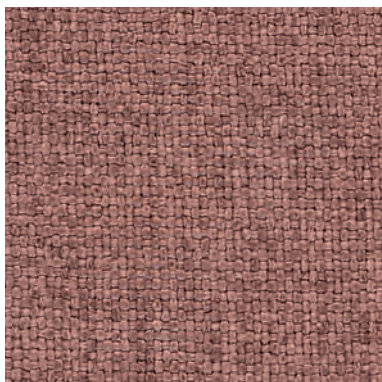
 **irrestringibile**  
non-shrink

**MANUTENZIONE / MAINTENANCE**



CAT. A


After



AFTER 095

**INFORMAZIONI TECNICHE / TECHNICAL INFORMATION**

Composizione / composition	100% PL
Martindale / martindale	60.000 cicli/cycles
Pilling / Pilling	5

 **idrorepellente**  
water repellent

 **irrestringibile**  
non-shrink

**MANUTENZIONE / MAINTENANCE**

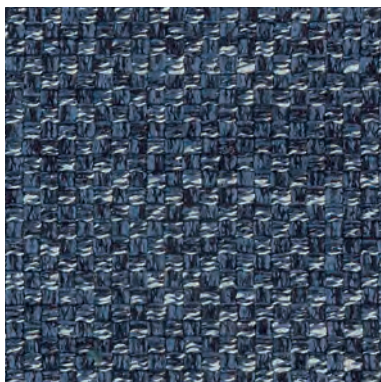


CAT. A

# Adria



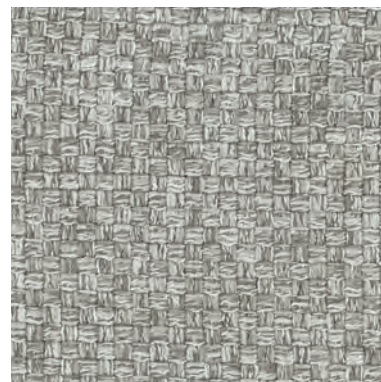
ADRIA 207



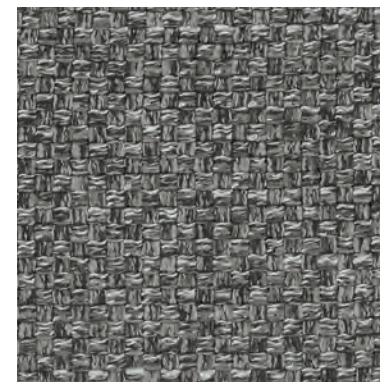
ADRIA 215



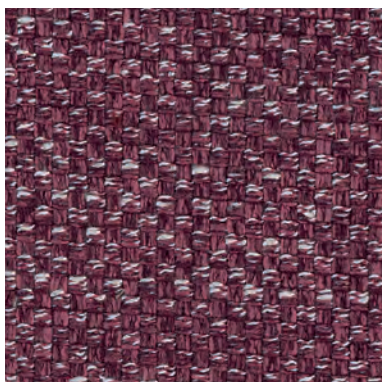
ADRIA 225



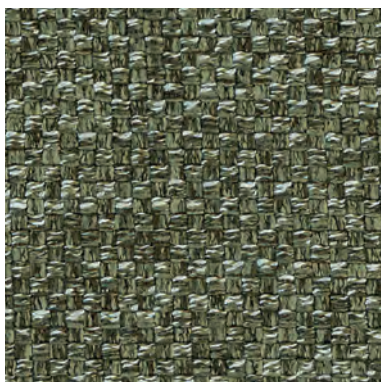
ADRIA 231



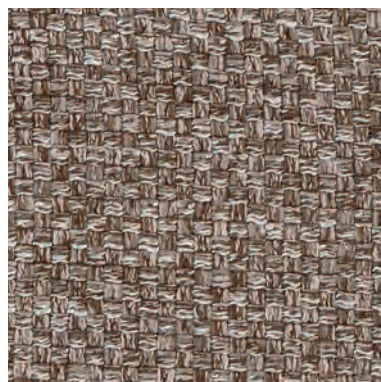
ADRIA 232



ADRIA 245



ADRIA 262




ADRIA 275



ADRIA 284

## INFORMAZIONI TECNICHE / TECHNICAL INFORMATION

Composizione / composition	70% PL - 30% VI
Martindale / martindale	30.000 cicli/cycles
Pilling / Pilling	4

 **idrorepellente**  
water repellent

## MANUTENZIONE / MAINTENANCE



**DITre  
Italia**

31016 Cordignano (Treviso) Zona Industriale Via del Lavoro, 21  
Tel. +39.0438.9999 Fax +39.0438.999993 [www.ditreitalia.it](http://www.ditreitalia.it) [info@ditreitalia.it](mailto:info@ditreitalia.it)